

WAAS CH 49015 W09A	APP CRS 088°	Rwy Idg 7000 TDZE 80 Apt Elev 80
--	------------------------	---

RNAV (GPS) RWY 9

NEW CASTLE (ILG)

⚠

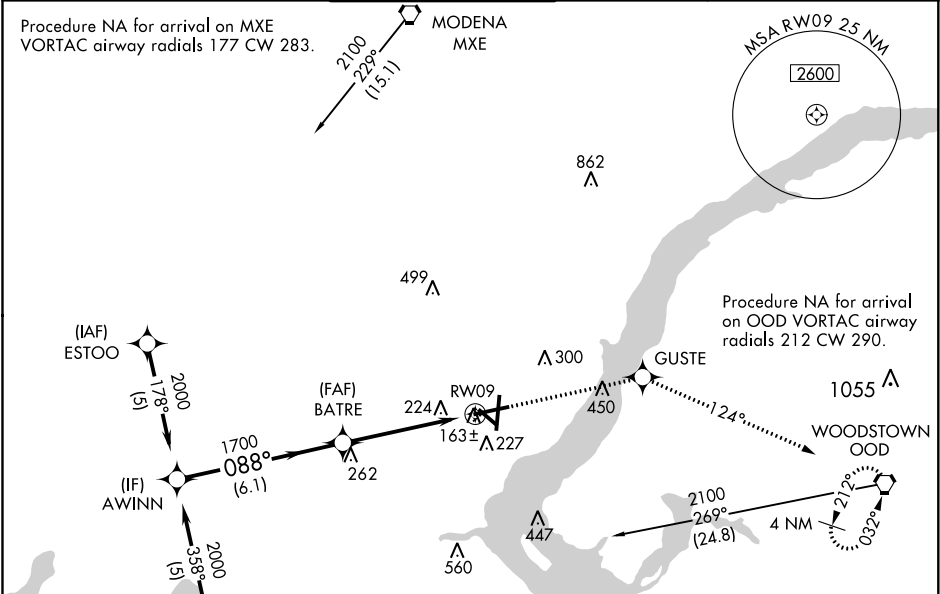
For uncompensated Baro-VNAV systems, LNAV/VNAV NA below -15°C (5°F) or above 48°C (118°F). DME/DME RNP-0.3 NA. Helicopter visibility reduction below ¾ mile NA.

⚠

VDP and Baro-VNAV NA when using Philadelphia Intl altimeter setting. When local altimeter setting not received, use Philadelphia Intl altimeter setting: increase LPV DA to 448, LNAV/VNAV DA to 568 and all MDA 60 feet; increase LPV all Cats visibility ¼ mile and LNAV/VNAV all Cats visibility ½ mile.

MISSED APPROACH: Climb to 2100 direct GUSTE and via track 124° to OOD VORTAC and hold.

ATIS 123.95	PHILADELPHIA APP CON 118.35 323.1	WILMINGTON TOWER ★ 126.0 (CTAF) 352.05	GND CON 121.7 275.8	CLNC DEL 119.95	UNICOM 122.95
-----------------------	---	---	-------------------------------	---------------------------	-------------------------



	ELEV 80	D TDZE 80
--	---------	------------------

AWINN

2000

Procedure Turn NA

GP 3.00°

TCH 55

↑ 2100

GUSTE

tr 124°

OOD

* LNAV only

* 1.2 NM to RW09

RW09

AWINN

BATRE

088°

1700

6.1 NM

3.6 NM

1.2 NM

CATEGORY	A	B	C	D
LPV DA	394-1 314 (400-1)			
LNAV/VNAV DA	521-1½ 441 (500-1½)			
LNAV MDA	520-1 440 (500-1)	520-1¼ 440 (500-1½)	520-1½ 440 (500-1½)	
CIRCLING	540-1 460 (500-1)	600-1½ 520 (600-1½)	640-2 560 (600-2)	

088° to RW09

61

7275 X 150

6602 X 150

7012 X 150

TWR 223

REIL Rwy 9, 27 and 19

HIRL Rwy 9-27 and 1-19

MIRL Rwy 14-32