
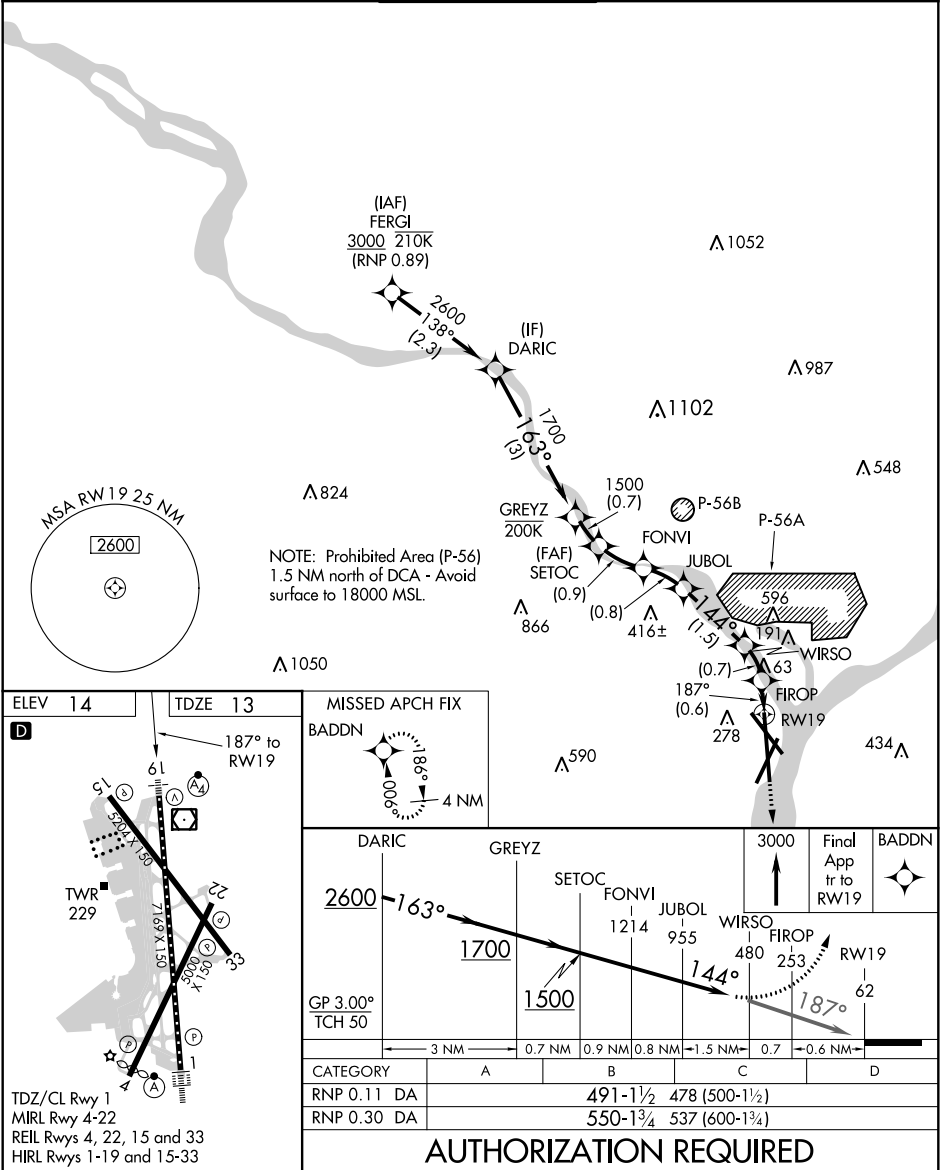


APP CRS 187°	Rwy Idg	6869	RNAV (RNP) RWY 19				
	TDZE	13	RONALD REAGAN WASHINGTON NATIONAL (DCA)				
	Apt Elev	14					
▼	For uncompensated Baro-VNAV systems, procedure NA below -9°C (16°F) or above 54°C (130°F). Inoperative table does not apply. RF and GPS required.		MALSF 	MISSED APPROACH: Climb to 3000 on the final approach track to RW19 then direct BADDN and hold, continue climb-in-hold to 3000.			
	D-ATIS 132.65	POTOMAC APP CON 119.85 239.25 (WEST/SOUTH) 124.2 360.8 (EAST)	WASHINGTON TOWER 119.1 257.6	GND CON 121.7 257.6	CLNC DEL 128.25	CPDLC	



NE-3, 03 DEC 2020 to 31 DEC 2020

NE-3, 03 DEC 2020 to 31 DEC 2020