

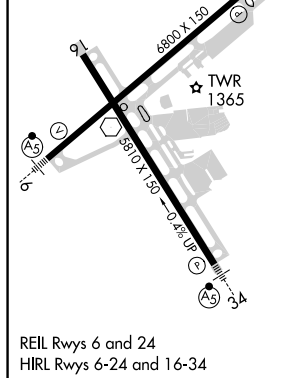
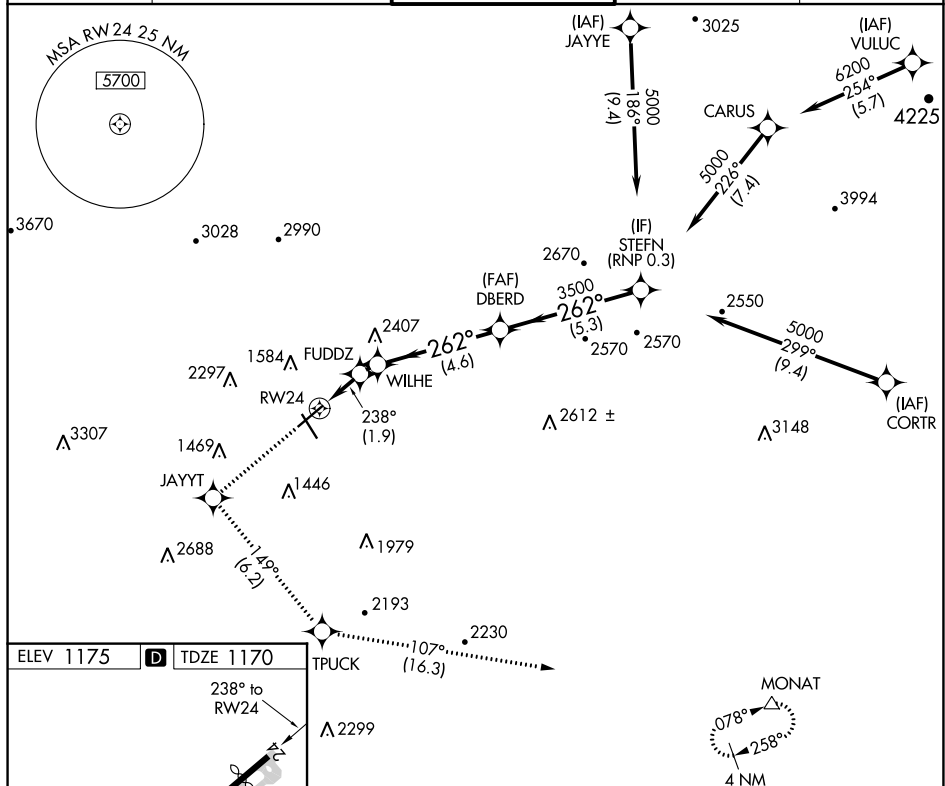
19227

RNAV (RNP) Z RWY 24  
ROANOKE-BLACKSBURG RGNL/WOODRUM FIELD (ROA)

**MISSED APPROACH:** Climb to 4000 direct JAYYT and on track 149° to TPUCK and on track 107° to MONAT and hold. # Missed approach requires minimum climb of 217 feet per NM to 3200.

**T** For uncompensated Baro-VNAV systems,  
**-13°C** procedure NA below -14°C or above 54°C.

ATIS	ROANOKE APP CON	ROANOKE TOWER	GND CON	CLNC DEL
132.375	126.9 339.8	118.3 257.8	121.9 257.8	119.7



4000 ↑	JAYYT ✦	TPUCK tr 149° ✦	MONAT tr 107° △	VGSI and RNAV glidepath not coincident (VGSI Angle 3.00/TCH 58).	
CATEGORY	A		B		D
#RNP 0.15 DA	1491-1		321 (400-1)		
RNP 0.30 DA	1579-1½		409 (500-1½)		
<b>AUTHORIZATION REQUIRED</b>					

ROANOKE, VIRGINIA  
Orig 15AUG19

ROANOKE-BLACKSBURG RGNL/WOODRUM FIELD (ROA)  
37°20'N-79°59'W      RNAV (RNP) Z RWY 24