

LOC/DME I-SZK <b>111.1</b> Chan <b>48</b>	APP CRS <b>072°</b>	Rwy Idg TDZE <b>1175</b> Apt Elev <b>1175</b>
---	------------------------	---

LDA Y RWY 6

ROANOKE-BLACKSBURG RGNL/WOODRUM FIELD (ROA)

▼

▲

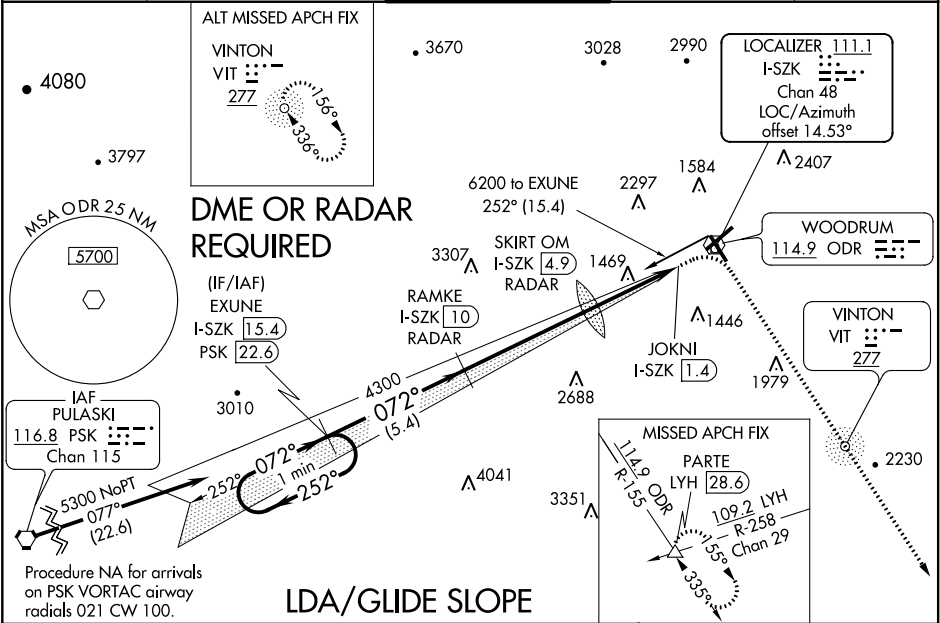
Inop table does not apply to S-LDA 6 Cats C and D. Circling NA NW of Rwy 6-24. For inop MALSR, increase S-LDA/GS 6 all Cats visibility to 1½.

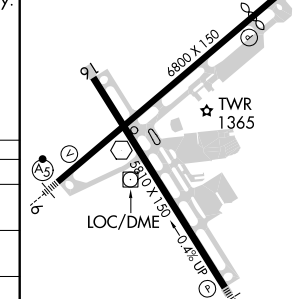
☞-13° C

MALSR

MISSED APPROACH: Climb to 1800 then climbing right turn to 5000 on ODR VOR R-155 to PARTE INT/LYH 28.6 DME and hold, continue climb-in-hold to 5000.

ATIS <b>132.375</b>	ROANOKE APP CON <b>126.9 339.8</b>	ROANOKE TOWER <b>118.3 257.8</b>	GND CON <b>121.9 257.8</b>	CLNC DEL <b>119.7</b>
------------------------	---------------------------------------	-------------------------------------	-------------------------------	--------------------------



One Minute Holding Pattern		VGSI and LDA glidepath not coincident (VGSI Angle 3.00/TCH 58).		1800	5000	PARTE	ELEV 1175	D	TDZE 1175				
EXUNE		RAMKE		SKIRT OM		JOKNI		PARTE					
I-SZK 15.4		I-SZK 10		I-SZK 4.9		I-SZK 1.4		I-SZK 28.6					
5300 ← 252°		→ 072°		→ 072°		→ 072°		→ 072°					
GS 3.00° TCH 55		* 2680		* LOC only.		* LOC only.		* LOC only.					
5.4 NM		5 NM		3.5 NM		1.2 NM							
CATEGORY	A	B	C	D									
S-LDA/GS 6	1615-1½ 440 (500-1½)												
S-LDA 6	2680-1	1505 (1600-1)	2680-3	1505 (1600-3)									
CIRCLING	2680-1½ 1505 (1600-1½)	2680-1½ 1505 (1600-1½)	2680-3 1505 (1600-3)	2800-3 1625 (1700-3)									
SKIRT OM/DME/RADAR													
S-LDA 6	1720-1	545 (600-1)	1720-1½	545 (600-1½)									
CIRCLING	1720-1½ 1245 (1300-3)	545 (600-1½) 1625 (1700-3)	2420-3 1245 (1300-3)	2800-3 1625 (1700-3)									
REIL Rwy 6 and 24 HIRL Rwy 6-24 and 16-34 FAF to MAP 8.5 NM													
Knots		60	90	120	150	180							
Min:Sec		8:30	5:40	4:15	3:24	2:50							