



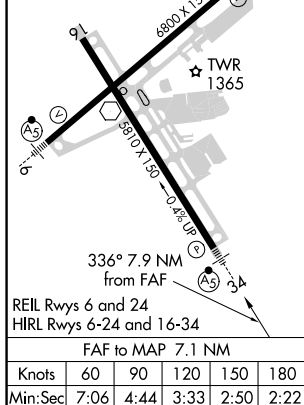
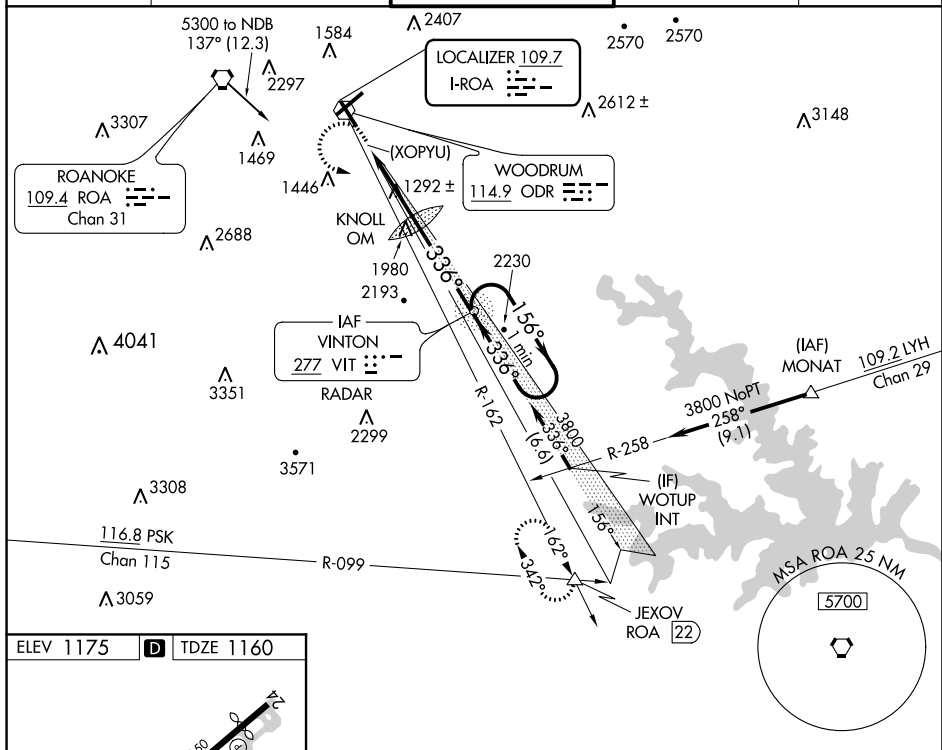


LOC I-ROA 109.7	APP CRS 336°	Rwy ldg 5810 TDZE 1160 Apt Elev 1175
---------------------------	------------------------	---

ILS or LOC RWY 34

ROANOKE-BLACKSBURG RGNL/WOODRUM FIELD (ROA)

   -13°C	Circling NA northwest of Rwy 6-24. ADF or RADAR required. For inop MALS, increase S-ILS 34 all Cats visibility ½ mile and S-LOC 34 Cat B ¼ mile, Cats C/D ½ mile. Inop table does not apply to S-LOC 34 Cat A.		MALS R 	MISSED APPROACH: Climb to 2100 then climbing left turn to 5000 on heading 125° and ODR R-162 to JEXOV INT/ROA 22 DME and hold.	
ATIS 132.375	ROANOKE APP CON 126.9 339.8	ROANOKE TOWER 118.3 257.8	GND CON 121.9 257.8	CLNC DEL 119.7	



2100
↑

5000
hdg 125°

ODR R-162

JEXOV
△

*LOC only.

KNOLL OM 2527

(XOPYU) 2560*

VIT NDB RADAR 3780

One Minute Holding Pattern

156° → 3800

← 336°

GS 3.00°
TCH 56

0.8 3.3 NM 3.8 NM

CATEGORY	A	B	C	D
S-ILS 34	1810-1 $\frac{3}{4}$	650 (700-1 $\frac{3}{4}$)		1913-2 $\frac{1}{4}$ 753 (700-2 $\frac{1}{4}$)
S-LOC 34	1980-1	820 (900-1)	1980-1 $\frac{7}{8}$	820 (900-1 $\frac{7}{8}$)
C CIRCLING	1980-1 805 (900-1)	1980-1 $\frac{1}{4}$ 805 (900-1 $\frac{1}{4}$)	2420-3 1245 (1300-3)	2800-3 1625 (1700-3)