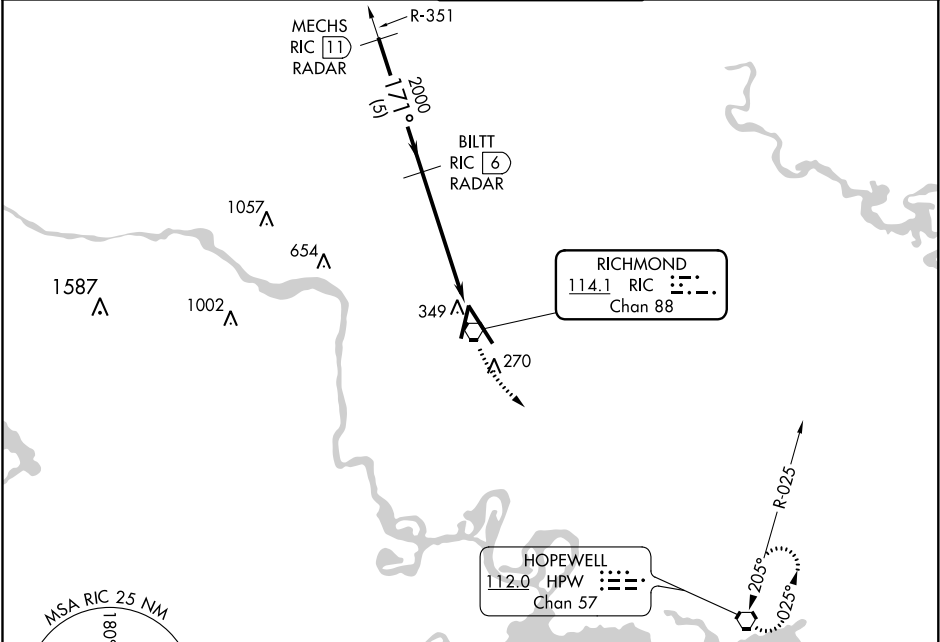


VORTAC RIC	APP CRS	Rwy Idg	9003
114.1	171°	TDZE	167
Chan 88		Apt Elev	167

VOR RWY 16
RICHMOND INTL (RIC)

DME or RADAR required. RADAR required for procedure entry.	MALSR	MISSED APPROACH: Climbing left turn to 2000 direct HPW VORTAC and hold.
Rwy 16 helicopter visibility reduction below RVR 4000 NA. For inop ALS, increase S-16 Cat A/B visibility to RVR 5500, and Cat C/D to 1 3/8 SM.		

ATIS	POTOMAC APP CON	RICHMOND TOWER	GND CON	CLNC DEL
119.15 263.025	126.4 282.375 (001°-185°)	121.1 257.8	121.9 348.6	127.55 348.6
	126.75 307.2 (186°-360°)			



ELEV 167		D TDZE 167	
TWR 343		171° 5.1 NM from FAF	
MECHS RIC 11 RADAR		RIC 2.2	
BILTT RIC 6 RADAR		RIC VORTAC 0.9	
2000		2000	
171°		171°	
5 NM		3.8 NM	
1.3 NM		2000 HPW	
CATEGORY		A	
S-16		640/40 473 (500-3/4)	
CIRCLING		660-1 493 (500-1)	
		700-1 1/2 533 (600-1 1/2)	
		720-2 553 (600-2)	
TDZ/CL Rwy 34		640/50 473 (500-1)	
HIRL Rwy 2-20 and 16-34		FAF to MAP 5.1 NM	
REIL Rwy 20		Knots	
		60 90 120 150 180	
		Min:Sec	
		5:06 3:24 2:33 2:02 1:42	

NE-3, 03 DEC 2020 to 31 DEC 2020

NE-3, 03 DEC 2020 to 31 DEC 2020