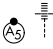
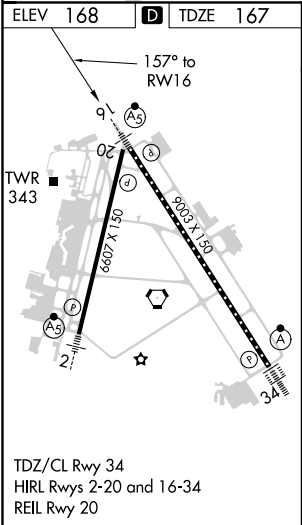
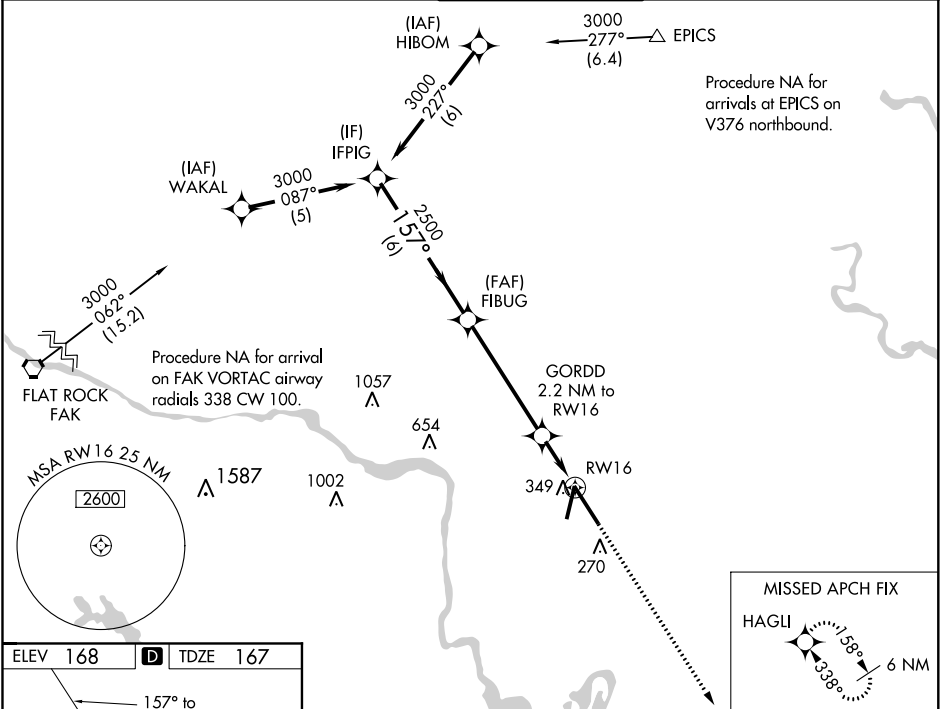


WAAS CH <b>72720</b> <b>W16A</b>	APP CRS <b>157°</b>	Rwy Idg TDZE <b>167</b> Apt Elev <b>168</b>
--	------------------------	---

RNAV (GPS) Z RWY 16

RICHMOND INTL (RIC)

RNP APCH: ▼ For uncompensated Baro-VNAV systems, LNAV/VNAV NA below -11°C (13°F) or above 54°C (130°F). For inop ALS increase LNAV/VNAV all Cts visibility to RVR 5400. ** RVR 1800 authorized with use of FD or AP or HUD to DA.		MALSR 	MISSED APPROACH: Climb to 2500 direct HAGLI and hold.	
ATIS <b>119.15 263.025</b>	POTOMAC APP CON <b>126.4 282.375</b> (001°-185°) <b>126.75 307.2</b> (186°-360°)	RICHMOND TOWER <b>121.1 257.8</b>	GND CON <b>121.9 348.6</b>	CLNC DEL <b>127.55 348.6</b>



VGSi and RNAV glidepath not coincident (VGSi Angle 3.00/TCH 71).				2500	HAGLI
GP 3.00° TCH 54				*LNAV only.	
IFPIG 3000 157° FIBUG 2500 157° GORDD 2.2 NM to RW16				RW16	
2500 920*				*1.2 NM to RW16	
6 NM 5 NM 1 NM 1.2 NM					
CATEGORY	A	B	C	D	
LPV DA **	367/24 200 (200-½)				
LNAV/VNAV DA	504/31 337 (400-⅝)				
LNAV MDA	600/24 433 (500-½)		600/40 433 (500-¾)		
CIRCLING	660-1 492 (500-1)		700-1½ 532 (600-1½)		720-2 552 (600-2)