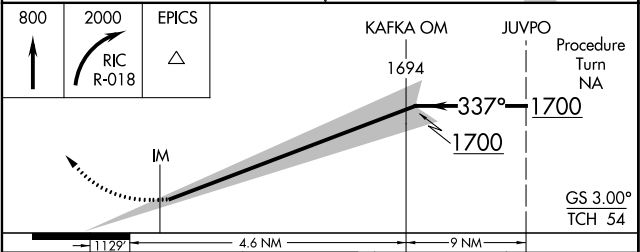
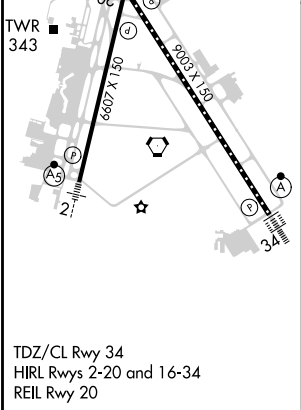
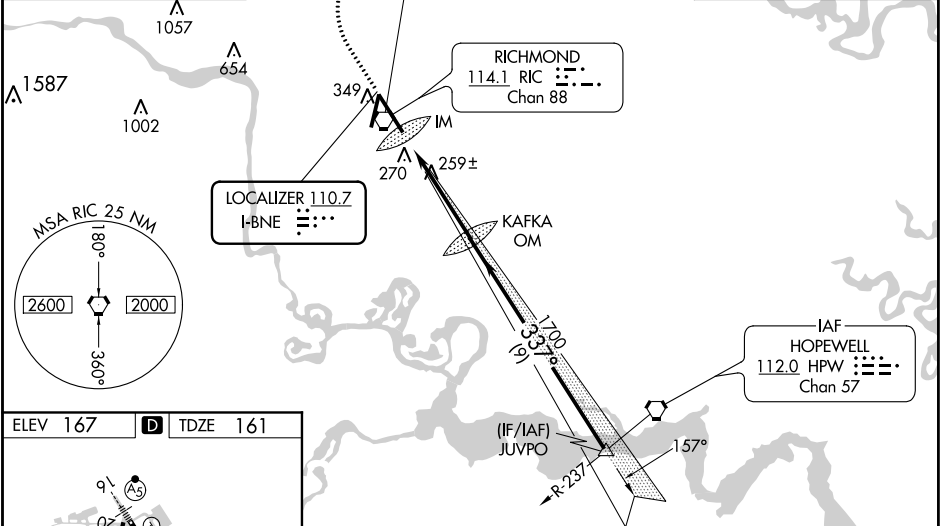
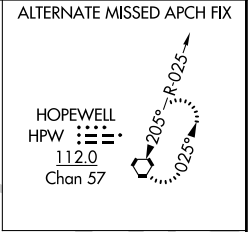
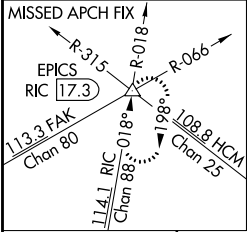


LOC I-BNE 110.7	APP CRS 337°	Rwy Idg TDZE 161 Apt Elev 167
---------------------------	------------------------	---

ILS RWY 34 (SA CAT I)
RICHMOND INTL (RIC)

Requires specific OPSPEC, MSPEC, or LOA approval and use of HUD to DH.	ALSIF-2 	MISSED APPROACH: Climb to 800 then climbing right turn to 2000 via RIC VORTAC R-018 to EPICS INT/ RIC 17.3 DME and hold.
--	-------------	--

ATIS 119.15 263.025	POTOMAC APP CON 126.4 282.375 (001°-185°) 126.75 307.2 (186°-360°)	RICHMOND TOWER 121.1 257.8	GND CON 121.9 348.6	CLNC DEL 127.55 348.6
-------------------------------	--	--------------------------------------	-------------------------------	---------------------------------



CATEGORY	A	B	C	D
S-ILS 34	RA 156/14 150 DA 311			

SA CATEGORY I ILS-SPECIAL AIRCREW
& AIRCRAFT CERTIFICATION REQUIRED

NE-3, 03 DEC 2020 to 31 DEC 2020

NE-3, 03 DEC 2020 to 31 DEC 2020