

PATUXENT RIVER, MARYLAND

RNAV (GPS) RWY 6

APCH CRS	Rwy Idg	11,799
059°	TDZE	39
	Arpt Elev	39

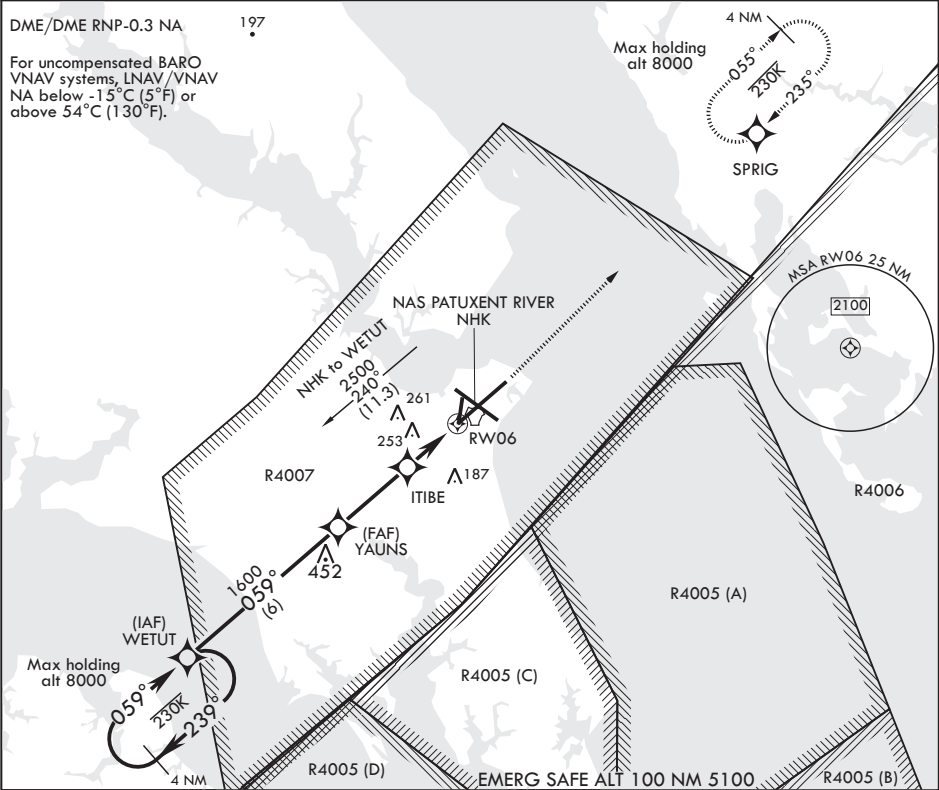
AL-314 (USN) PATUXENT RIVER NAS (TRAPNELL FLD) (KNHK)

**⚠** \* When ALS inop, increase CAT ABCD vis to 1 5/8 miles.  
\*\* When ALS inop, increase CAT AB vis to 1 mile, CAT CD vis to 1 3/8 miles.

ALSF-1

MISSED APPROACH: Climb to 800 then climbing left turn to 2500 direct SPRIG and hold.

ATIS 322.425	APP CON/DEP CON 121.0 250.3	TOWER 123.7 343.65	GND CON 120.6 336.4	CLNC DEL 135.2 316.125	ASR/PAR
-----------------	--------------------------------	-----------------------	------------------------	---------------------------	---------



GP 3.00°  
TCH 46

WETUT

2500

059°

239°

YAUNS

1600

ITIBE

720

1.3 NM to RW06

RW06

2.8 NM

2 NM

↑ LNAV only

800

2500

SPRIG

ELEV 39

TDZE 39

GP 3.00°  
TCH 46

WETUT

2500

059°

239°

YAUNS

1600

ITIBE

720

1.3 NM to RW06

RW06

2.8 NM

2 NM

CATEGORY	A	B	C	D
LNAV/VNAV DA*	526-1 1/4	487	(500-1 1/4)	
LNAV MDA**	500-1/2 461	(500-1/2)	500-1 461	(500-1)
560-1	521 (600-1)	561 (600-1)	581 (600-1 1/2)	621 (700-2)

**C** CIRCLING

560-1

521 (600-1)

561 (600-1)

581 (600-1 1/2)

621 (700-2)

TDZL/CL Rwy 6

HIRL Rlys 6-24, 14-32

PATUXENT RIVER, MARYLAND

38°17'N - 76°25'W PATUXENT RIVER NAS (TRAPNELL FLD) (KNHK)

Amdt 1 09NOV17

RNAV (GPS) RWY 6

NE-3, 03 DEC 2020 to 31 DEC 2020

NE-3, 03 DEC 2020 to 31 DEC 2020