

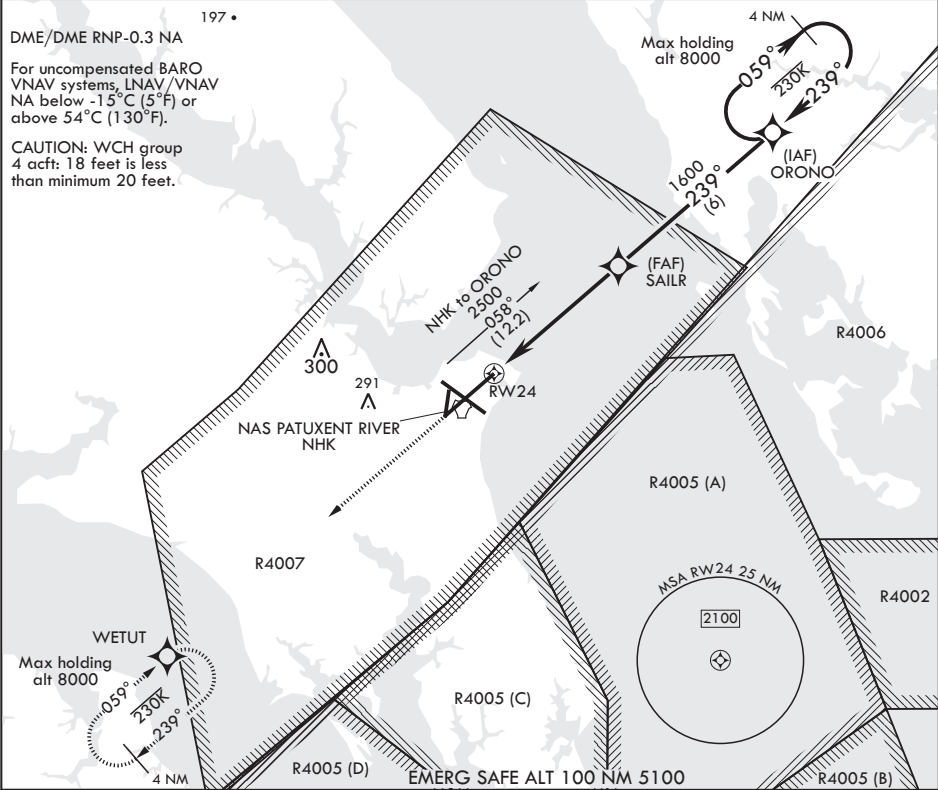
PATUXENT RIVER, MARYLAND

RNAV (GPS) RWY 24

APCH CRS	Rwy Idg	11,799
239°	TDZE	20
	Arpt Elev	39

AL-314 (USN) PATUXENT RIVER NAS (TRAPNELL FLD) (KNHK)

V			MISSED APPROACH: Climb to 2500 direct WETUT and hold.		
ATIS 322.425	APP CON/DEP CON 121.0 250.3	TOWER 123.7 343.65	GND CON 120.6 336.4	CLNC DEL 135.2 316.125	ASR/PAR



2500

WETUT

ELEV 39

TDZE 20

The diagram illustrates the instrument approach for RW24. It shows a 4.8 NM distance from the start of the approach to the SAILR fix. From SAILR, the path continues to the ORONO fix, which is 1.2 NM from RW24. The final segment to the 2500 threshold is at a 059° heading. Backsight angles of 239° are indicated at both the SAILR and ORONO fixes. A 1600' obstacle is shown near the SAILR fix. The approach is labeled '\*LNAV only'.

GP 3.00°

TCH 42

CATEGORY	A		B	C	D
LNAV/VNAV DA	309-1 289 (300-1)		320-1 300 (300-1)	328-1 308 (300-1)	339-1½ 319 (300-1½)
LNAV MDA	440-1 420 (500-1)		440-1½ 420 (500-1½)		
<b>C</b> CIRCLING	560-1 521 (600-1)		600-1 561 (600-1)	620-1½ 581 (600-1½)	660-2 621 (700-2)

TDZL/CL Rwy 6

HIRL Rwy 6-24, 14-32

This detailed diagram shows the approach path with several key points:
 

- BCN H** and **TWR 242** are located near the start of the approach.
- The path passes through **H** and **HH** fixes.
- Distances of 11,799 x 200 and 9,732 x 200 are indicated for different segments.
- Angles of 239° to RW24 and 059° are shown.
- A 150' obstacle is marked near the end of the approach.

PATUXENT RIVER, MARYLAND 38°17'N - 76°25'W PATUXENT RIVER NAS (TRAPNELL FLD) (KNHK)

Amdt 1 09NOV17

RNAV (GPS) RWY 24

NE-3, 03 DEC 2020 to 31 DEC 2020

NE-3, 03 DEC 2020 to 31 DEC 2020