


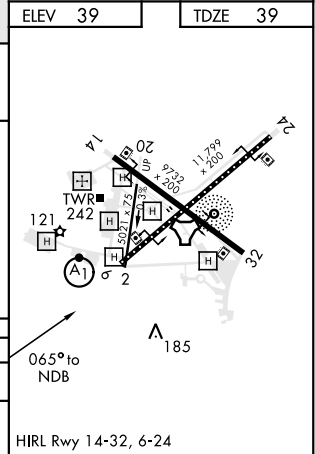
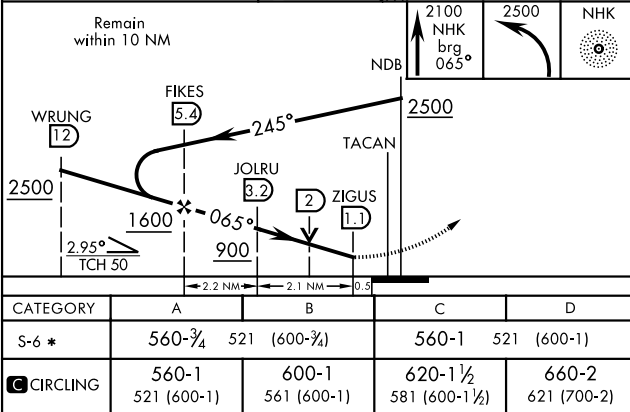
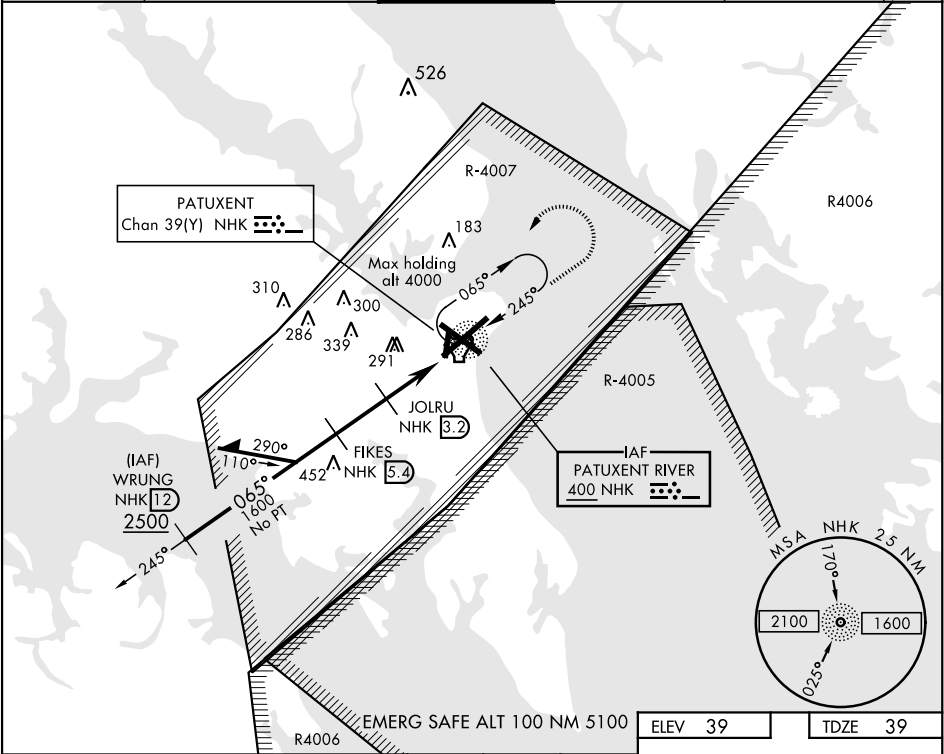
NDB/DME RWY 6

NDB NHK 400	APCH CRS 065°	Rwy ldg 11,799 TDZE 39 Arpt Elev 39
-----------------------	-------------------------	--

AL-314 [USN] PATUXENT RIVER NAS (TRAPNELL FIELD) (KNHK)

DME or RADAR required.	ALSIF-1 	MISSED APPROACH: Climb to 2100 on 065° bearing from NHK NDB, then climbing left turn to 2500 direct NHK NDB and hold.
* When ALS inop, increase CAT AB vis to 1 mile, CAT CD vis to 1½ miles.		

ATIS 322.425	PATUXENT APP/DEP CON 121.0 250.3	PATUXENT TOWER 123.7 343.65	GND CON 120.6 336.4	CLNC DEL 135.2 316.125	ASR/ PAR
------------------------	--	---------------------------------------	-------------------------------	----------------------------------	-------------



NDB/DME RWY 6

NE-3, 03 DEC 2020 to 31 DEC 2020

NE-3, 03 DEC 2020 to 31 DEC 2020