

TACAN RWY 28

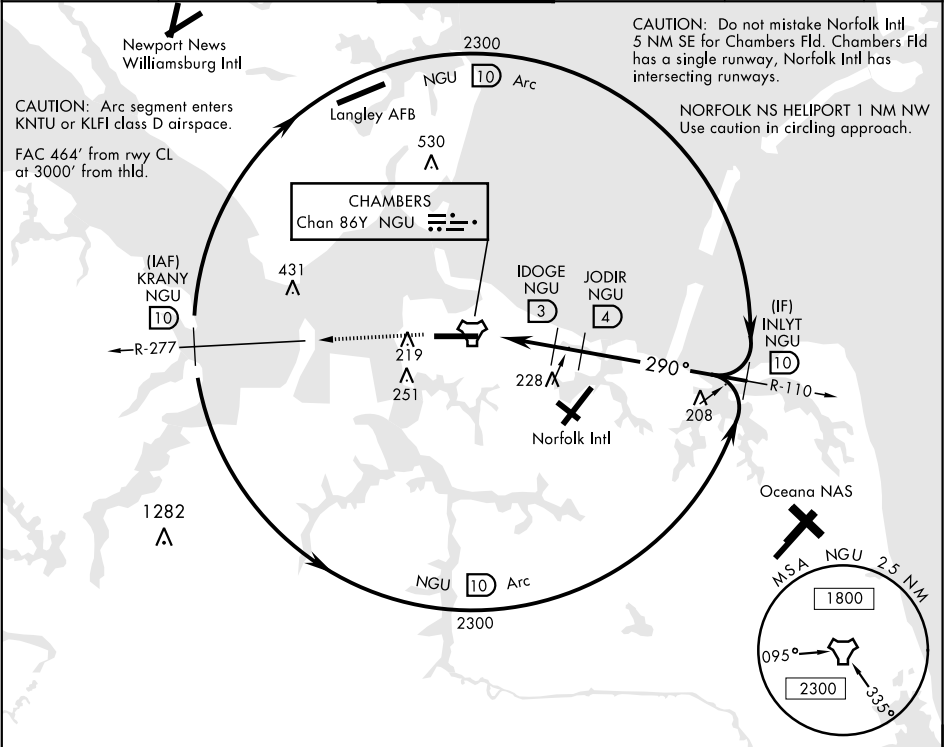
TACAN NGU Chan 86Y	APCH CRS 290°	Rwy Idg 7375 TDZE 14 Arpt Elev 15
------------------------------	-------------------------	--

AL-290 [USN]

NORFOLK NS (CHAMBERS FIELD) (KNGU)

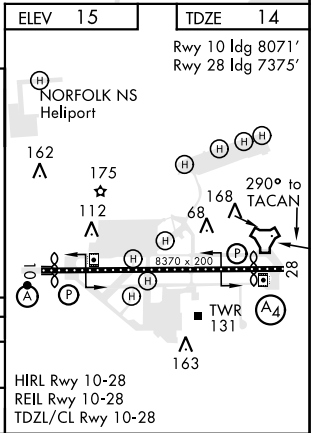
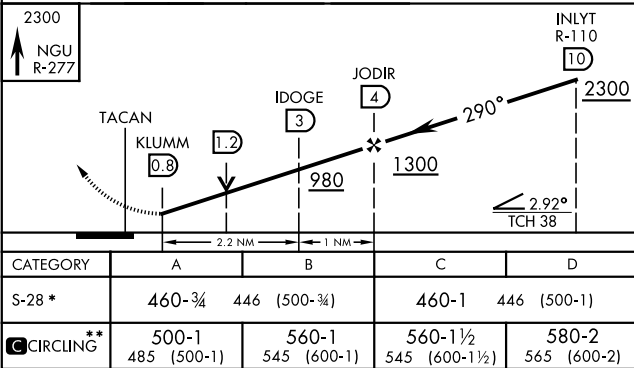
▼ * When ALS inop, increase CAT AB vis to 1 mile, CAT CD vis to 1½ miles. ** Circling not authorized S of Rwy 10-28. Helicopter vis reduction below ¾ mile not authorized.	SSALS (A4)	MISSED APPROACH: Climb to 2300 on NGU TACAN R-277 then as directed by ATC.
---	----------------------	--

ATIS 118.425 342.0	NORFOLK APP CON 118.9 353.7	CHAMBERS TOWER 124.3 379.15	GND CON 121.8 370.85	CLNC DEL 120.7 339.8	ASR/PAR
------------------------------	---------------------------------------	---------------------------------------	--------------------------------	--------------------------------	---------



RADAR REQUIRED

EMERG SAFE ALT 100 NM 4100



NORFOLK, VIRGINIA

36°56'N-76°17'W

NORFOLK NS (CHAMBERS FIELD) (KNGU)

Amtd 6 26MAR20

TACAN RWY 28

NE-3, 03 DEC 2020 to 31 DEC 2020

NE-3, 03 DEC 2020 to 31 DEC 2020