

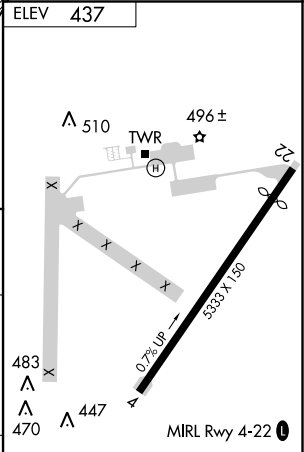
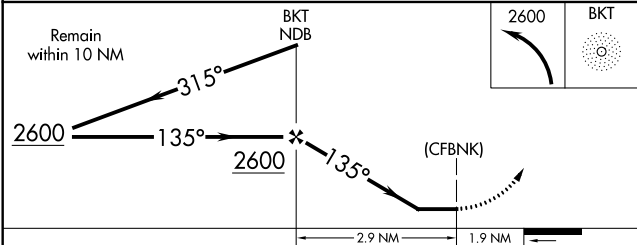
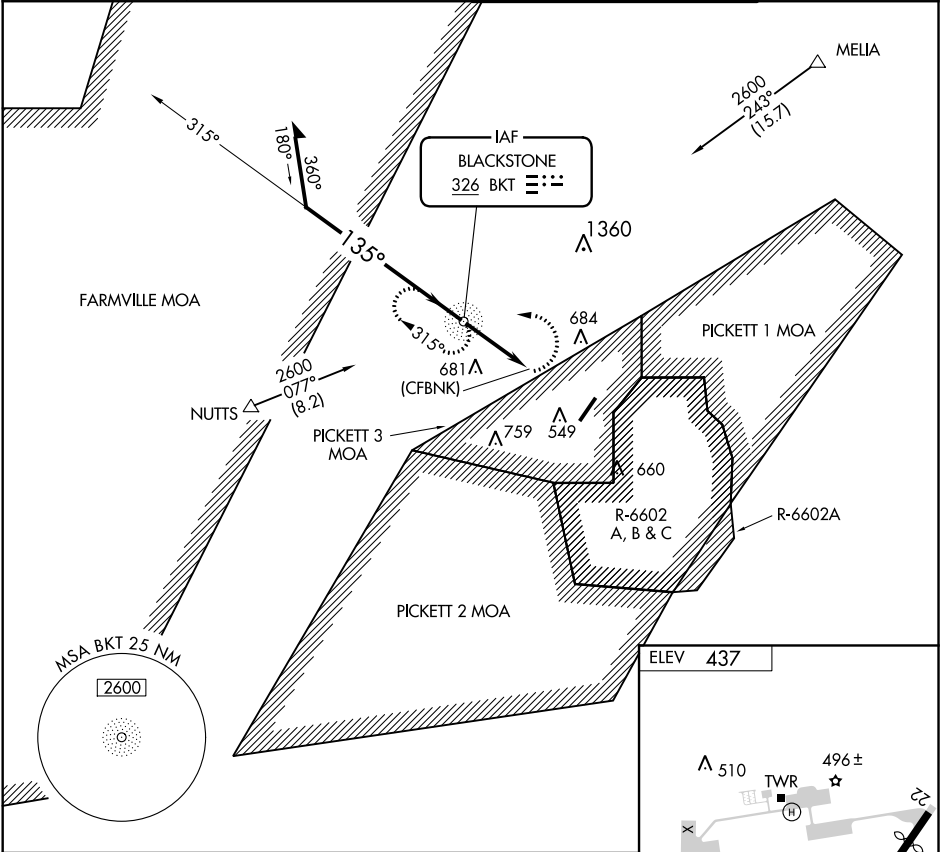
NDB BKT <b>326</b>	APP CRS <b>135°</b>	Rwy ldg TDZE Apt Elev <b>N/A</b> <b>N/A</b> <b>437</b>
-----------------------	------------------------	---

NDB-A

ALLEN C PERKINSON BLACKSTONE AAF (BKT)

NA	Use South Hill altimeter setting. Circling NA east of Rwy 4-22.	MISSED APPROACH: Climbing left turn 2600 direct BKT NDB and hold. Continue climb-in-hold to 2600.
----	--	--

AWOS-3 <b>119.225</b>	WASHINGTON CENTER <b>118.75 377.1</b>	BLACKSTONE TOWER ★ <b>126.2 241.0</b>	CTAF <b>126.2</b>
--------------------------	--	--	----------------------



CATEGORY	A	B	C	D	FAF to MAP 2.9 NM
CIRCLING	1040-2¼	603 (700-2¼)		NA	Knots Min:Sec
					60 2:54
					90 1:56
					120 1:27
					150 1:10
					180 0:58

NDB-A

NE-3, 03 DEC 2020 to 31 DEC 2020

NE-3, 03 DEC 2020 to 31 DEC 2020