

FORT DRUM, NEW YORK

ILS or LOC RWY 21

LOC/DME I- <b>GTB</b> <b>108.5</b> Chan <b>22</b>	APCH CRS <b>209°</b>	Rwy ldg <b>10,000</b> TDZE <b>677</b> Arpt Elev <b>690</b>
---	-------------------------	--

AL-5754 [USA]

WHEELER-SACK AAF (KGTB)

▼ \* When ALS inop, increase CAT ABCDE vis to ¾ mile.  
\*\* When ALS inop, increase CAT ABC vis to 1 mile,  
CAT DE vis to 1 ¼ miles.

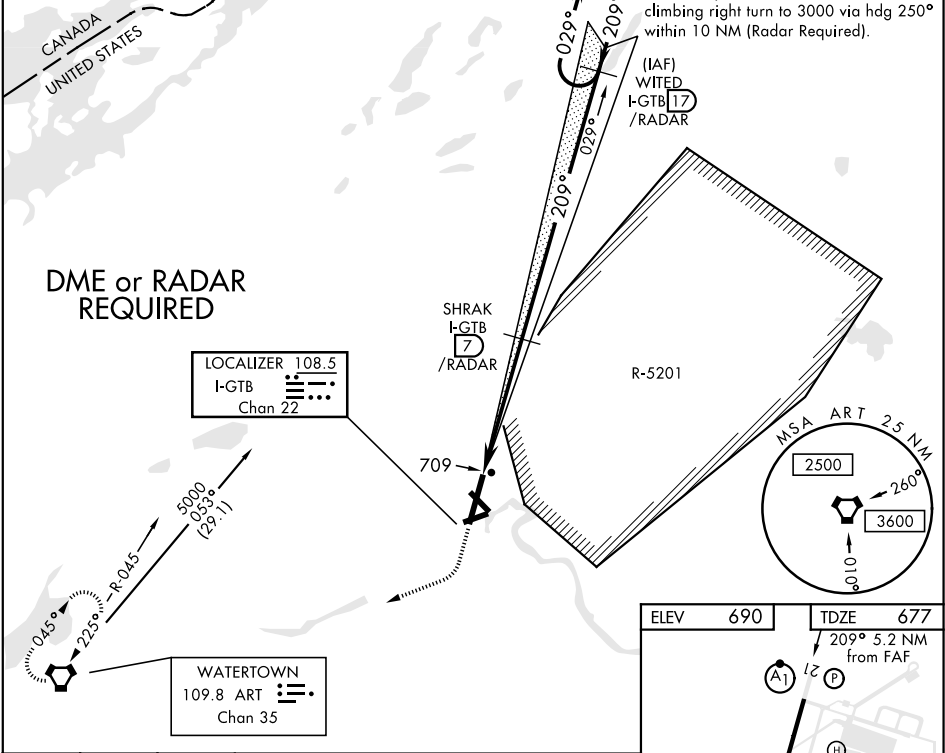



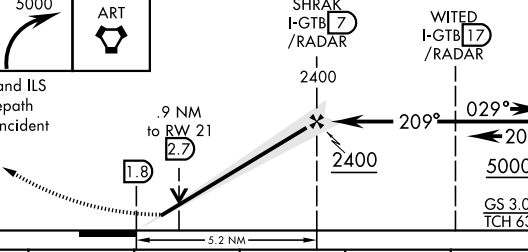
MISSED APPROACH: Climb to 1200, then climbing right turn to 5000 direct ART VORTAC and hold. Continue climb-in-hold to 5000.

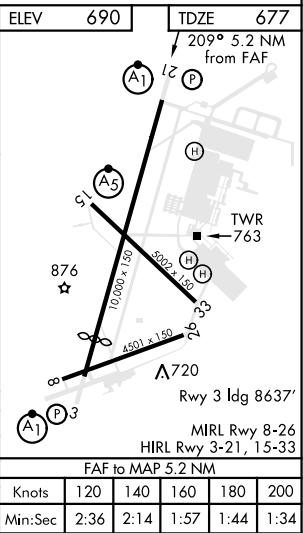
ATIS <b>119.525</b>	WHEELER-SACK APP CON <b>124.875 257.6</b>	WHEELER-SACK TOWER <b>118.75 290.25</b>	GND CON <b>121.9 229.8</b>	CLNC DEL <b>121.9</b>	ASR/PAR
------------------------	--	--	-------------------------------	--------------------------	---------

\*\*\* Circling NA E of Rwy 21 and 33. Circling NA for CAT E to Rwy 8-26 and 15-33. Circling NA for CAT B, C and D to Rwy 8.

ALTERNATE MISSED APPROACH: When directed by ATC, climb to 1200, then climbing right turn to 3000 via hdg 250° within 10 NM (Radar Required).



1200 ↑	5000 ↷	ART 		
VGS and ILS glidepath not coincident				
</				



FORT DRUM, NEW YORK  
Amdt 2A 12DEC13

44°03'N-75°43'W

WHEELER-SACK AAF (KGTB)

ILS or LOC RWY 21

NE-2, 03 DEC 2020 to 31 DEC 2020

NE-2, 03 DEC 2020 to 31 DEC 2020