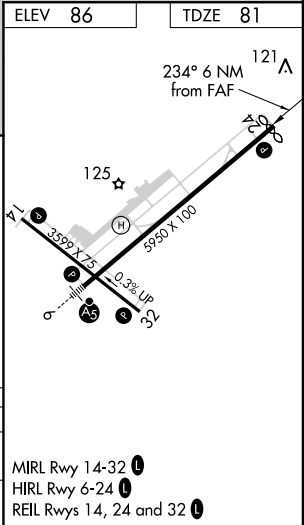
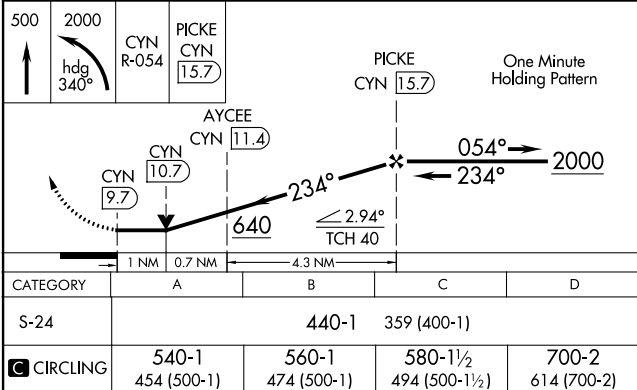
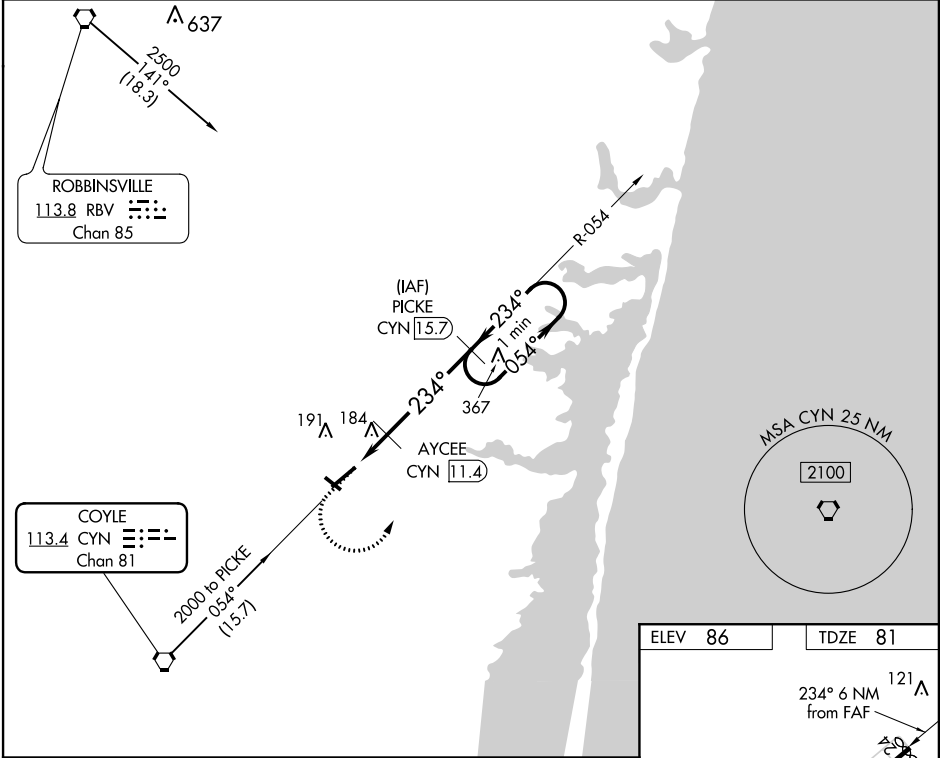


VORTAC CYN	APP CRS	Rwy Idg	5834
113.4	234°	TDZE	81
Chan 81		Apt Elev	86

VOR RWY 24  
OCEAN COUNTY (MJX)

DME required for procedure entry. DME required.	MISSED APPROACH: Climb to 500 then climbing left turn to 2000 on heading 340° and on CYN VORTAC R-054 to PICKE/CYN 15.7 DME and hold.
Rwy 24 helicopter visibility reduction below 3/4 SM NA. Circling Rwy 14, 32 NA at night.	

AWOS-3PT	MC GUIRE APP CON	GCO	UNICOM
119.875	126.475 363.8	121.725	122.7 (CTAF) 0



NE-2, 03 DEC 2020 to 31 DEC 2020

NE-2, 03 DEC 2020 to 31 DEC 2020