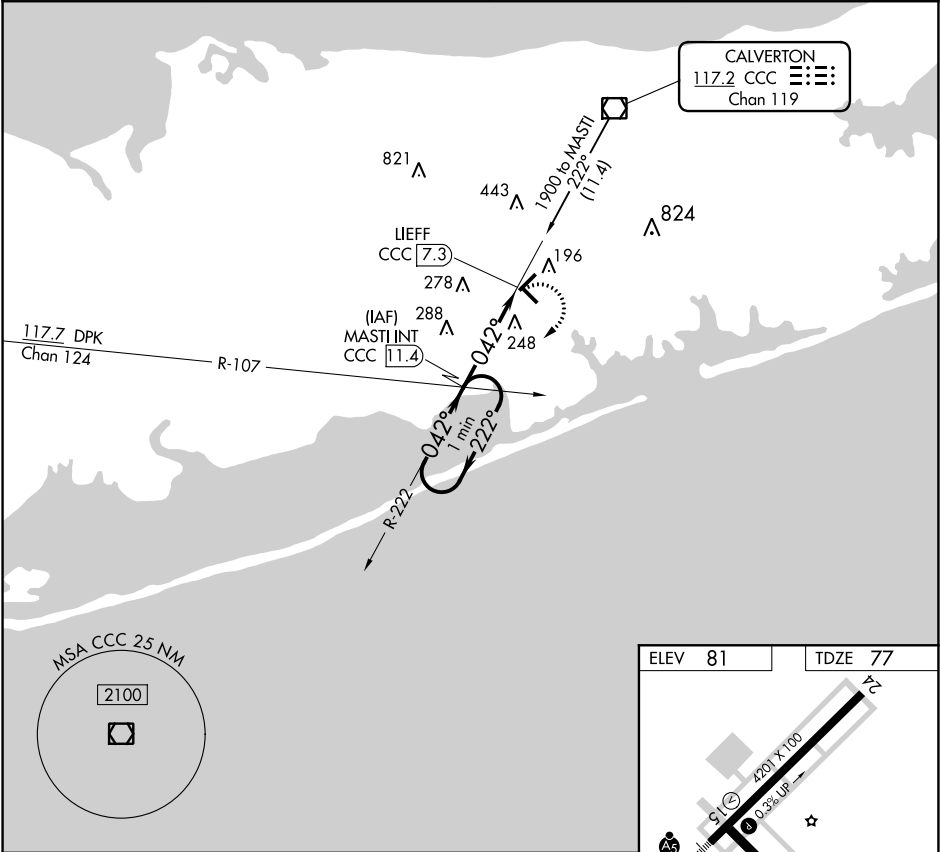


VOR/DME CCC	APP CRS	Rwy Idg	4201
117.2	042°	TDZE	77
Chan 119		Apt Elev	81

VOR RWY 6
BROOKHAVEN (HWV)

<p>▼ Inoperative table does not apply.</p> <p>▲ When local altimeter setting not received, use Islip altimeter setting and increase all MDAs 40 feet.</p>	<p>MALSR</p>	MISSED APPROACH: Climbing right turn to 1600 via CCC VOR/DME R-222 to MASTI INT/11.4 DME and hold.
---	--------------	--

ASOS 119.625	NEW YORK APP CON 120.05 343.75	CLNC DEL 133.2	UNICOM 122.8 (CTAF) 0
-----------------	-----------------------------------	-------------------	--------------------------



One Minute Holding Pattern				1600 CCC R-222	MASTI INT
MASTI INT CCC 11.4				CCC 8.9	LIEFF CCC 7.3
1600 ← 222° 042° →				CCC 8.9	LIEFF CCC 7.3
1400				CCC 8.9	LIEFF CCC 7.3
2.96°				CCC 8.9	LIEFF CCC 7.3
TCH 47				CCC 8.9	LIEFF CCC 7.3
2.5 NM				CCC 8.9	LIEFF CCC 7.3
1.6 NM				CCC 8.9	LIEFF CCC 7.3
CATEGORY	A	B	C	D	
S-6	620-1	543 (600-1)	NA		
CIRCLING	620-1	539 (600-1)	NA		

REIL Rwy 15, 24 and 33 0					
MIRL Rwy 6-24 and 15-33 0					
FAF to MAP 4.1 NM					
Knots	60	90	120	150	180
Min:Sec	4:06	2:44	2:03	1:38	1:22

NE-2, 03 DEC 2020 to 31 DEC 2020

NE-2, 03 DEC 2020 to 31 DEC 2020