

WAAS
CH **82520**
W33A

APP CRS
330°

Rwy Idg **4782**
TDZE **471**
Apt Elev **475**

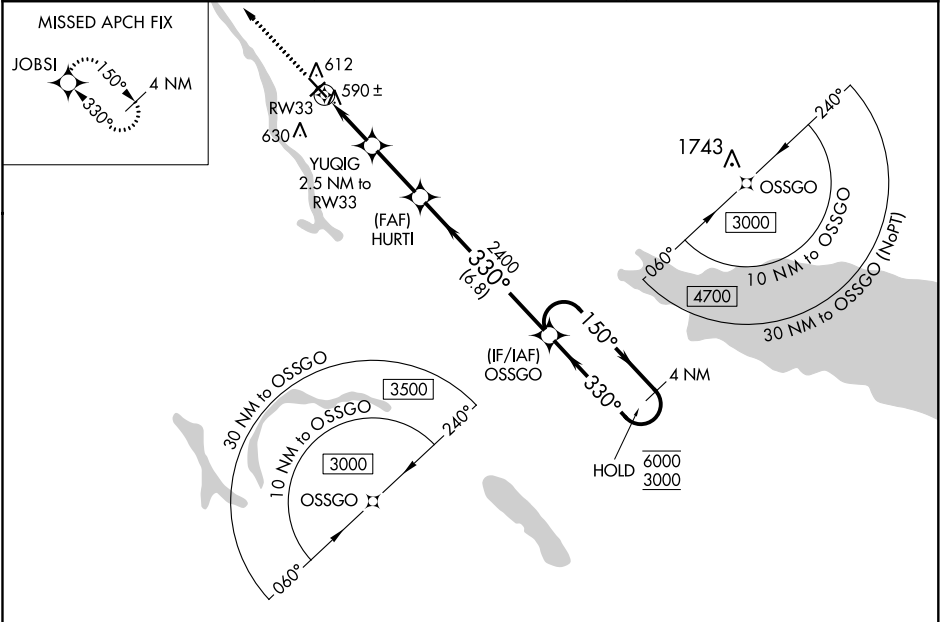
RNAV (GPS) RWY 33
OSWEGO COUNTY (FZY)

RNP APCH.

Rwy 33 helicopter visibility reduction below ¾ SM NA. For uncompensated Baro-VNAV systems, LNAV/VNAV NA below -22°C or above 54°C.

MISSED APPROACH: Climb to 3000 direct JOBSI and hold.

ASOS 119.275	SYRACUSE APP CON 126.125 269.125	UNICOM 123.0 (CTAF)
------------------------	--	-------------------------------



ELEV **475**

D

TDZE **471**

3000

JOBSI

* LNAV only

YUGIG 2.5 NM to RW33

HURTI 2400

OSSGO 4 NM Holding Pattern

330°

150°

330°

6000

3000

GP 3.55°

TCH 36

0.9

1.6 NM

2.5 NM

6.8 NM

CATEGORY	A	B	C	D
LPV DA	810-1	339 (400-1)		NA
LNAV/VNAV DA	771-7/8	300 (300-7/8)		NA
LNAV MDA	840-1	369 (400-1)		NA
<div><div></div><div>CIRCLING</div></div>	920-1 445 (500-1)	940-1 465 (500-1)	960-1½ 485 (500-1½)	NA

FULTON, NEW YORK
Amdt 1A 26MAR20

43°21'N-76°23'W

OSWEGO COUNTY (FZY)
RNAV (GPS) RWY 33