

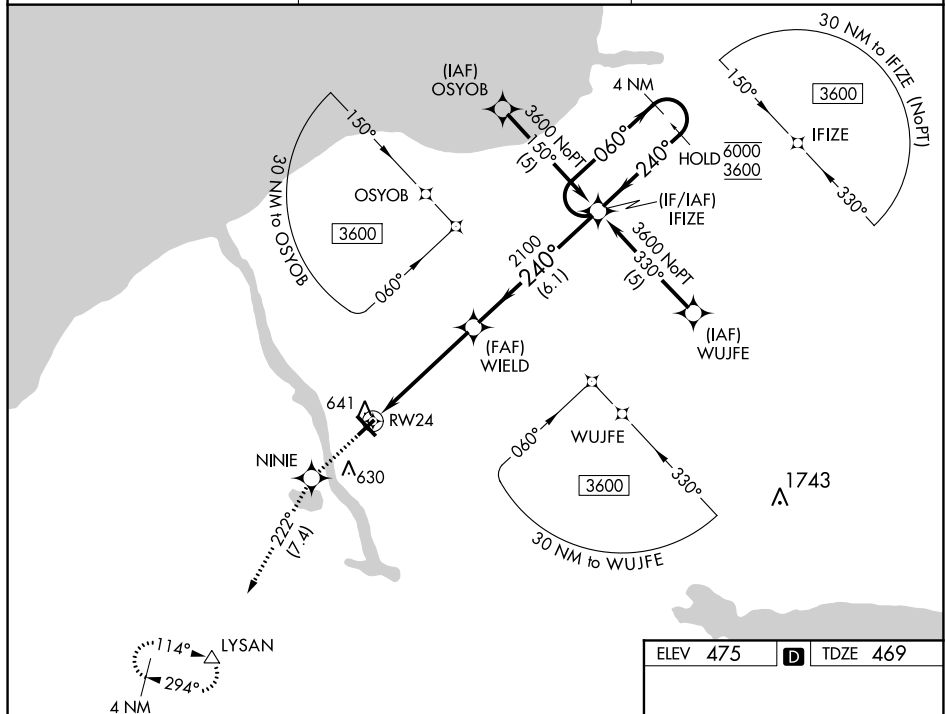
RNAV (GPS) RWY 24

OSWEGO COUNTY (FZY)

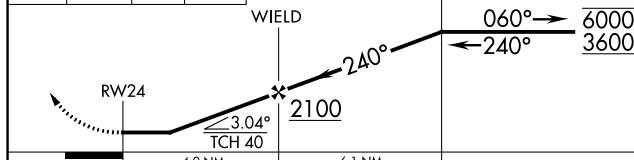
T
A Rwy 24 helicopter visibility reduction below 1 SM NA.

MISSED APPROACH: Climb to 3000
direct NINIE and on track 222° to
LYSAN and hold.

ASOS 119.275	SYRACUSE APP CON 126.125 269.125	UNICOM 123.0 (CTAF) 0
-----------------	-------------------------------------	--------------------------



3000 ↑	NINIE ✦	tr 222°	LYSAN △
-----------	------------	------------	------------



CATEGORY	4.9 NM		6.1 NM	
	A	B	C	D
LNAV MDA	960-1	491 (500-1)	960-1 $\frac{3}{8}$ 491 (500-1 $\frac{3}{8}$)	960-1 $\frac{1}{2}$ 491 (500-1 $\frac{1}{2}$)
CIRCLING	1000-1	525 (600-1)	1000-1 $\frac{1}{2}$ 525 (600-1 $\frac{1}{2}$)	1040-2 565 (600-2)

