


ILS or LOC RWY 33
OSWEGO COUNTY (FZY)

	Circling Rwy 24 NA at night.
NA	Rwy 33 helicopter visibility reduction below $\frac{3}{4}$ SM NA.

MISSED APPROACH: Climb to 1200 then climbing right turn to 3000 on heading 100° and SYR VORTAC R-018 to PAGER/SYR 15.9 DME and hold.

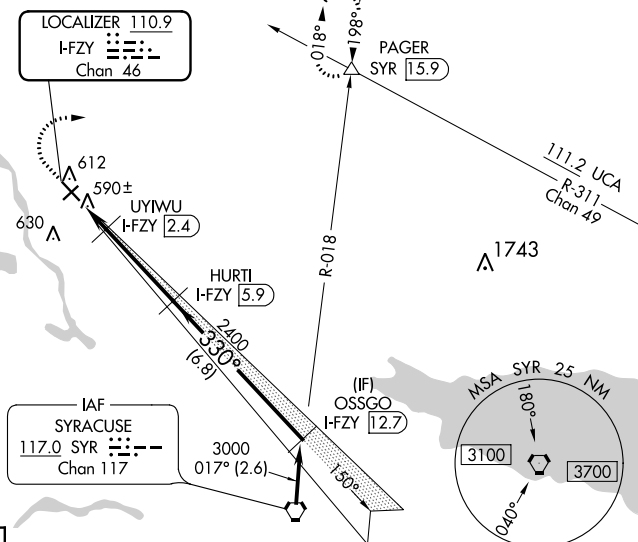
ALTERNATE MISSED
APCH FIX

109.8 ART
R-199
Chan 35

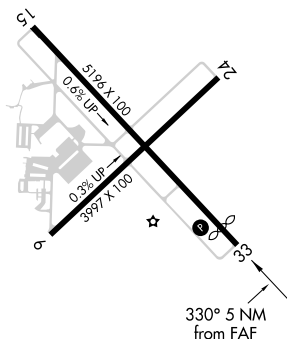
117.0 SYR
R-018
Chan 117

111.2 UCA
R-311
Chan 49

PAGER
ART 32



Procedure NA for arrivals at SYR VORTAC
on V29 southbound.



MIRL Rwy 6-24 **L**
HIRL Rwy 15-33 **L**
REIL Rwy 15 and 33 **L**
REIL Rwy 6 and 24

1200 ↑	3000 hdg 100°	SYR R-018	PAGER △	
*LOC only				
<p>Diagram illustrating the SYR R-018 VORTAC station and its associated frequencies and distances:</p> <ul style="list-style-type: none">Station: SYR R-018Frequencies: 1200, 3000, 980*Distances: 0.9 NM, 0.7 NM, 3.4 NM, 6.8 NMLocations: I-FZY (0.9), UYIWU (2.4), HURTI (5.9), OSSGO (12.7)Bearing: 330°GS 3.55° TCH 36				
CATEGORY	A	B	C	D
S-ILS 33	814-1	343 (400-1)		NA
S-LOC 33	840-1	369 (400-1)		NA
CIRCLING	920-1 445 (500-1)	940-1 465 (500-1)	960-1½ 485 (500-1½)	NA

NE-2, 03 DEC 2020 to 31 DEC 2020