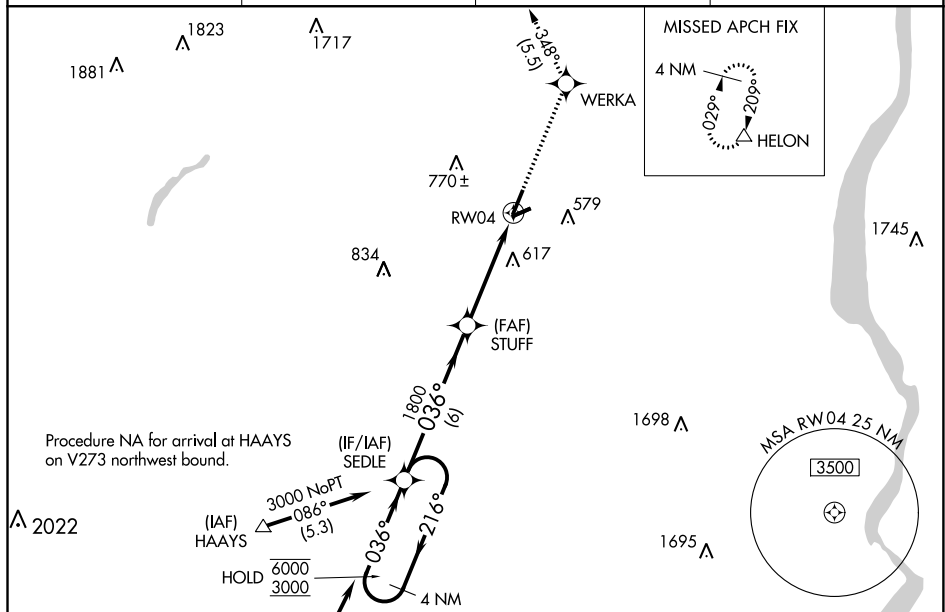


APP CRS 036°	Rwy Idg TDZE Apt Elev	5006 355 370
------------------------	-----------------------------	---

T Circling Rwy 8, 22, 26 NA at night. Rwy 4 helicopter visibility
A reduction below $\frac{3}{4}$ SM NA.

MISSED APPROACH: Climb to 5300 direct WERKA and on track 348° to HELON and hold, continue climb-in-hold to 5300.

UNICOM
122.725 (CTAF) **L**

Procedure NA for arrival at HAAYS
on V273 northwest bound.

Procedure NA for arrival on
SAX VORTAC airway radials
311 CW 093.

(IAF)
SPARTA
SAX

4 NM
Holding Pattern

SEDLE

5300	WERKA	tr 348°	HELON △
------	-------	------------	------------

CATEGORY	A	B	C	D
LNAV MDA	1060-1	705 (700-1)	1060-2	705 (700-2)
C CIRCLING	1180-1	810 (900-1)	1180-2 ³ / ₄ 810 (900-2 ³ / ₄)	1220-2 ³ / ₄ 850 (900-2 ³ / ₄)

