

APP CRS
260°

Rwy Idg
TDZE
Apt Elev

3349
361
370

RNAV (GPS) RWY 26

ORANGE COUNTY (MGJ)

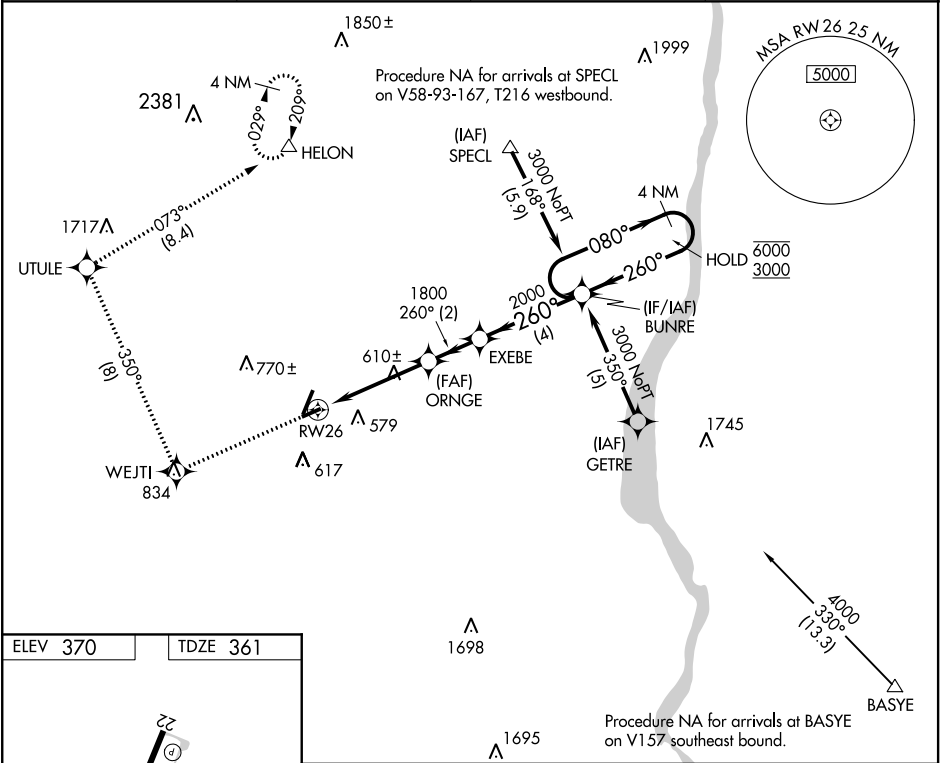
RNP APCH.

▼ Rwy 26 helicopter visibility reduction below 1 SM NA.

▲ Straight-in Rwy 26 NA at night, Circling Rwy 8, 22, 26 NA at night.

MISSED APPROACH: Climb to 4000 direct WEJTI and right turn on track 350° to UTULE and on track 073° to HELON and hold.

ASOS 119.275	NEW YORK APP CON 132.75 363.1	CLNC DEL 123.85	UNICOM 122.725 (CTAF) 0
-----------------	----------------------------------	--------------------	----------------------------



ELEV 370

TDZE 361

REIL Rwy 4 and 22
HIRL Rwy 4-22
MIRL Rwy 8-26

4000	WEJTI	UTULE	HELON	Visual Segment- Obstacles.	
		tr 350°	tr 073°	BUNRE	4 NM Holding Pattern
VGSI and descent angles not coincident (VGSI Angle 3.50/TCH 43).					
<p>080° → 6000 ← 260° 3000</p> <p>260°</p> <p>2000</p> <p>1800</p> <p>ORNGE</p> <p>EXEBE</p> <p>4.3 NM</p> <p>2 NM</p> <p>4 NM</p>					
CATEGORY	A		B		C
LNAV MDA	920-1 559 (600-1)		920-1 559 (600-1 5/8)		920-1 559 (600-1 3/4)
CIRCLING	1200-1 830 (900-1 1/4)		1200-2 830 (900-2 1/2)		1220-2 850 (900-2 3/4)