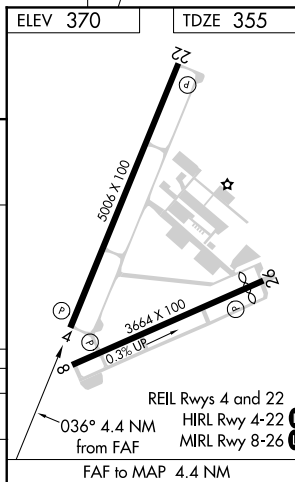
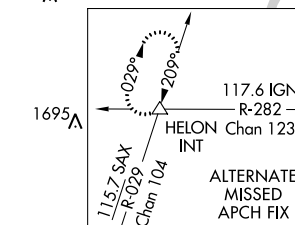
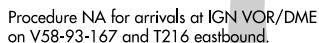


ILS or LOC RWY 4
ORANGE COUNTY (MGJ)

MISSED APPROACH: Climb to 1100 then climbing left turn to 4000 direct HVO VOR/DME and hold.

UNICOM
122.725 (CTAF) **L**

CATEGORY	A	B	C	D
S-ILS 4	682-1 327 (400-1)			
S-LOC 4	960-1	605 (600-1)	960-1 $\frac{3}{4}$	605 (600-1 $\frac{3}{4}$)
C CIRCLING	1180-1	810 (900-1)	1180-2 $\frac{1}{4}$ 810 (900-2 $\frac{1}{4}$)	1220-2 $\frac{3}{4}$ 850 (900-2 $\frac{3}{4}$)

NE-2, 03 DEC 2020 to 31 DEC 2020