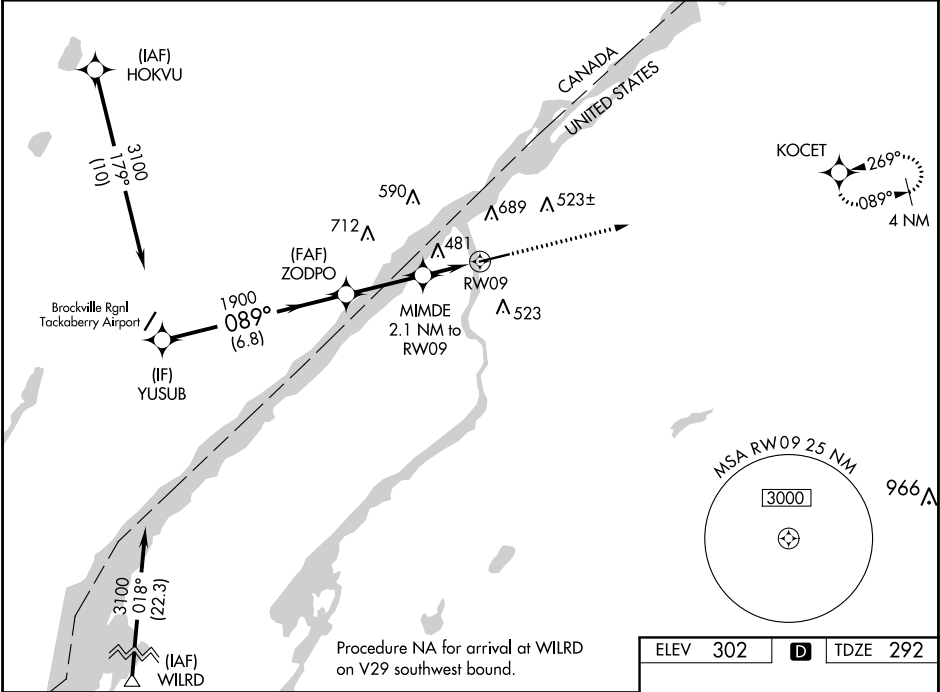


WAAS CH 69528 W09A	APP CRS 089°	Rwy Idg 6006 TDZE 292 Apt Elev 302
--	------------------------	---

RNAV (GPS) RWY 9

OGDENSBURG INTL (OGS)

RNP APCH.		MISSED APPROACH: Climb to 2000 direct KOCET and hold.
Rwy 9 helicopter visibility reduction below ¾ SM NA. For uncompensated Baro-VNAV systems, LNAV/VNAV NA below -15°C or above 54°C.		
AWOS-3 118.525	BOSTON CENTER 135.25 377.1	UNICOM 122.8 (CTAF) 0



CATEGORY	A	B	C	D
LPV DA	543-¾		251 (300-¾)	
LNAV/VNAV DA	781-1⅜		489 (500-1⅜)	
LNAV MDA	740-1 448 (500-1)		740-1⅜ 448 (500-1⅜)	
CIRCLING	760-1 458 (500-1)	1000-1 698 (700-1)	1000-2 698 (700-2)	1000-2¼ 698 (700-2¼)

