

APP CRS

122°

Rwy Idg

2739

TDZE

104

Apt Elev

106

RNAV (GPS) RWY 12

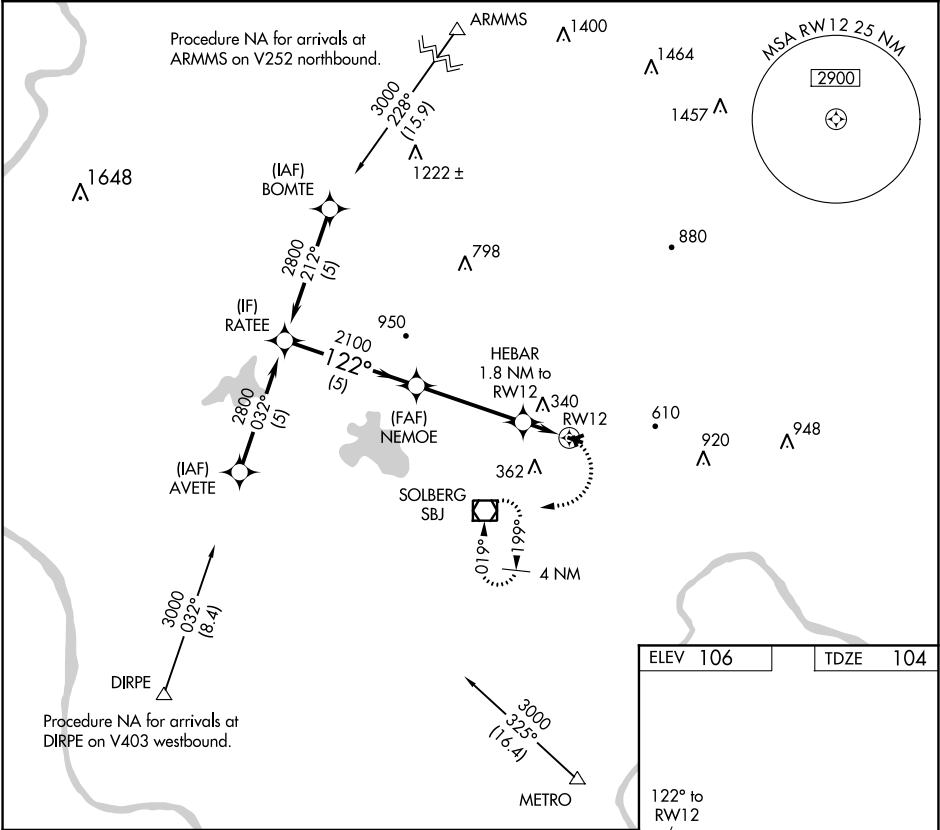
SOMERSET (SMQ)

RNP APCH.

Procedure NA at night. Rwy 12 helicopter visibility reduction below 1 SM NA.

MISSED APPROACH: Climbing right turn to 2500 direct SBJ VOR/DME and hold, continue climb in hold to 2500

ASOS 120.6	NEW YORK APP CON 132.8 379.9	UNICOM 123.0 (CTAF)	118.325 0
---------------	---------------------------------	------------------------	-----------



RATEE		Visual Segment - Obstacles.		2500	SBJ
2800		NEMOE			
122°		2100			
5 NM		4.1 NM		1.8 NM	
CATEGORY	A	B	C	D	
LN AV MDA	640-1	536 (600-1)	NA		
CIRCLING	640-1	960-1¼	NA		
	534 (600-1)	854 (900-1¼)			

REIL Rwy 12 and 30

MIRL Rwy 12-30