

LOC/DME I-FOK	APP CRS	Rwy Idg	9002
111.7	236°	TDZE	66
Chan 54		Apt Elev	66

ILS or LOC RWY 24

FRANCIS S GABRESKI (FOK)

▼

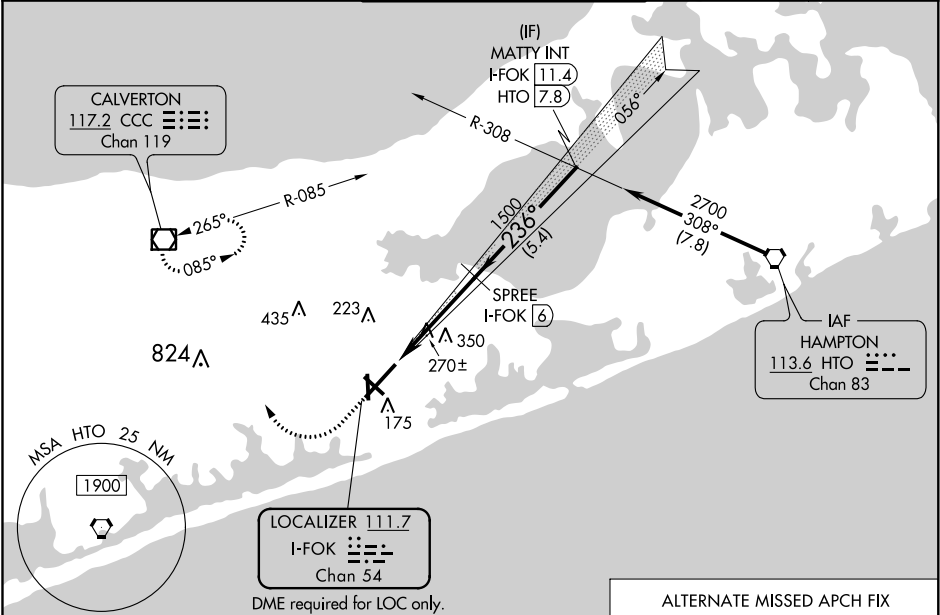
▲

Circling Rwy 15 NA at night.

MALSR

MISSED APPROACH: Climb to 880 then climbing right turn to 2000 direct CCC VOR/DME and hold.

ASOS	NEW YORK APP CON	SUFFOLK COUNTY TOWER ★	GND CON	UNICOM
119.925	125.975 343.65	125.3 (CTAF) 236.6	121.8 225.4	122.95



ELEV 66

TDZE 66

236° 4.3 NM from FAF


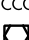
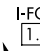

HIRL Rwy 6-24

MIRL Rwy 15-33

REIL Rws 6, 15, and 33

FAF to MAP 4.3 NM

Knots	60	90	120	150	180
Min:Sec	4:18	2:52	2:09	1:43	1:26

				<div><div><div><div><div></div><div>128°</div></div><div><div></div><div>308°-R-128</div></div></div><div><div><div>HAMPTON</div><div>113.6 HTO</div><div>Chan 83</div></div><div><div><div><div></div><div></div><div></div></div><div><div></div></div></div></div></div></div></div>	
<div><div>880</div><div>↑</div></div>		<div><div>2000</div><div></div></div>		<div><div>CCC</div><div></div></div> <div><div>VGSI and ILS glidepath not coincident</div><div>(VGSI Angle 3.00/TCH 77).</div></div>	
<div><div>* LOC only</div></div>		<div><div>* I-FOK</div><div><div>2.9</div></div></div>		<div><div>SPREE</div><div>I-FOK <div>6</div></div></div>	
<div><div></div><div><div>I-FOK</div><div><div>1.7</div></div></div></div>		<div><div>1500</div><div></div></div>		<div><div>MATTY INT</div><div>I-FOK <div>11.4</div></div></div>	
<div><div>1.2 NM</div></div>		<div><div>3.1 NM</div></div>		<div><div>5.4 NM</div></div>	
<div><div>236°</div></div>		<div><div>2700</div></div>		<div><div>GS 3.00°</div><div>TCH 60</div></div>	
CATEGORY		A		B	
S-ILS 24		266-½		200 (200-½)	
S-LOC 24		520-½ 454 (500-½)		520-7⁄8 454 (500-7⁄8)	
600-1 534 (600-1)		620-1 554 (600-1)		700-1¾ 634 (700-1¾)	
740-2¼ 674 (700-2¼)					
CIRCLING					

NE-2, 03 DEC 2020 to 31 DEC 2020

NE-2, 03 DEC 2020 to 31 DEC 2020