

WAAS
CH **58229**
W23A

APP CRS
232°

Rwy Idg
TDZE **770**
Apt Elev **790**

RNAV (GPS) RWY 23

MALONE-DUFORT (MAL.)

RNP APCH.

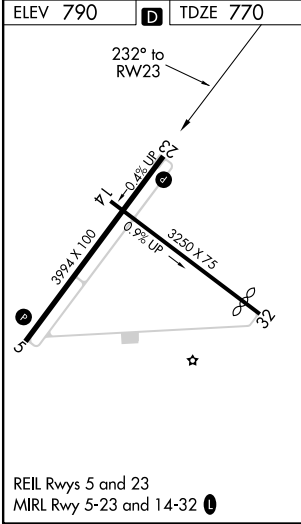
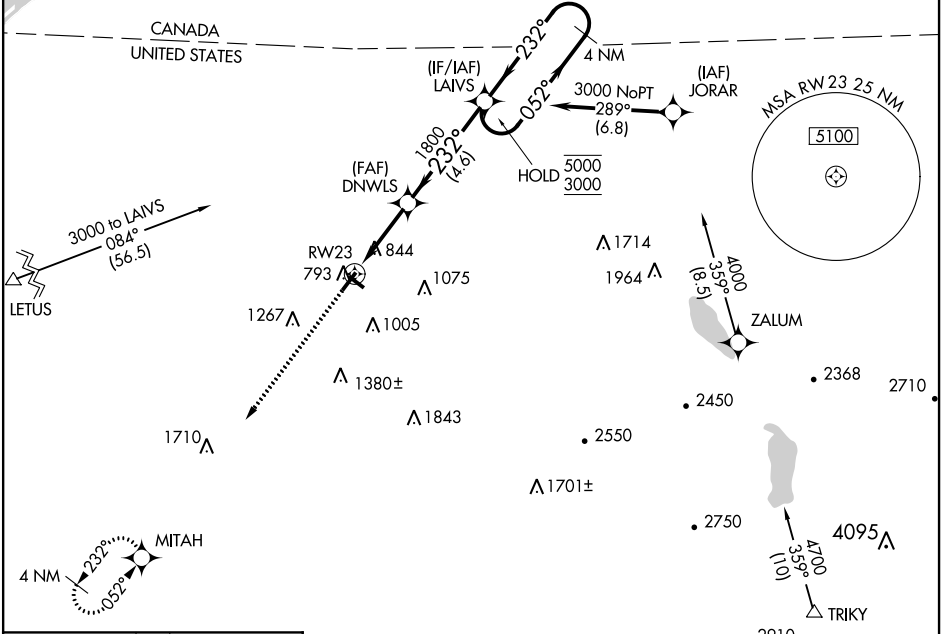
▼

NA

Baro-VNAV NA. Use Massena Intl-Richards Field altimeter setting; when not received, use Adirondack Rgnl altimeter setting and increase all DA/MDA 60 feet, increase LPV all Cats, LNAV Cat C and Circling Cat C visibility ¼ SM, increase LNAV/VNAV all Cats visibility 1½ SM. Circling Rwy 5 NA at night.

MISSED APPROACH:
Climb to 3500 direct MITAH and hold.

AWOS-AV 122.8	MSS ASOS 128.075	BOSTON CENTER 135.25 377.1	UNICOM 122.8 (CTAF) 0
-------------------------	----------------------------	--------------------------------------	---------------------------------



TUPPER CENTRAL MOA			
3500	MITAH	VGSI and RNAV glidepath not coincident (VGSI Angle 3.00°/TCH 43).	
↑	✧	DNWLS	LAWS
RWY 23		1800	4 NM Holding Pattern
		232°	052°
		1800	5000
		3.2 NM	4.6 NM
		GP 3.00°	TCH 40
CATEGORY	A	B	C
LPV DA	1155-1¼	385 (400-1¼)	NA
LNAV/VNAV DA	1263-1¾	493 (500-1¾)	NA
LNAV MDA	1240-1	470 (500-1)	1240-1¾
			470 (500-1¾)
CIRCLING	1460-1	1480-1	1480-2
	670 (700-1)	690 (700-1)	690 (700-2)