

LOC/DME I-HSP 108.3 Chan 20	APP CRS 059°	Rwy Idg TDZE 94 Apt Elev 99	7006
---	------------------------	---	-------------

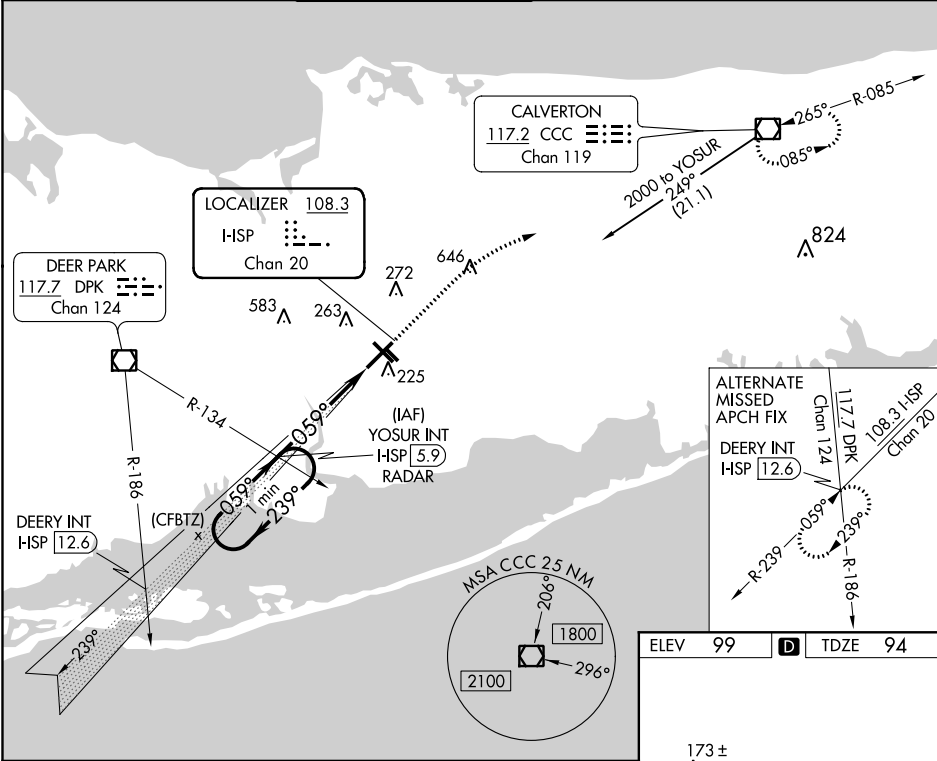
ILS RWY 6 (SA CAT I & II)
LONG ISLAND MAC ARTHUR (ISP)

Procedure NA when tower closed. SA CAT I: Requires specific OPSPEC, MSPEC, or LOA approval and use of HUD to DH.
SA CAT II: Reduced lighting: Requires specific OPSPEC, MSPEC, or LOA approval and use of autoland or HUD to touchdown.

MALSR

MISSED APPROACH: Climb to 600 then climbing right turn to 2000 direct CCC VOR/DME and hold.

ATIS 120.725	NEW YORK APP CON 120.05 343.75	LONG ISLAND TOWER* 119.3 (CTAF) 0335.5	GND CON 135.3	CLNC DEL 121.85	UNICOM 122.95
------------------------	--	--	-------------------------	---------------------------	-------------------------



One Minute Holding Pattern

YOSUR INT I-HSP 5.9 RADAR

600 2000 CCC

CATEGORY	A	B	C	D
S-ILS 6	SA CAT I RA 162/14 150 DA 244			
S-ILS 6	SA CAT II RA 111/12 100 DA 194			

SA CATEGORY I & II ILS SPECIAL AIRCREW & AIRCRAFT CERTIFICATION REQUIRED

ELEV 99 TDZE 94

MIRL Rwy 15R-33L
HIRL Rwy 6-24

NE-2, 03 DEC 2020 to 31 DEC 2020

NE-2, 03 DEC 2020 to 31 DEC 2020