

VOR/DME TEB	APP CRS	Rwy Idg	6013
108.4	231°	TDZE	8
Chan 21		Apt Elev	8

VOR RWY 24

TETERBORO (TEB)

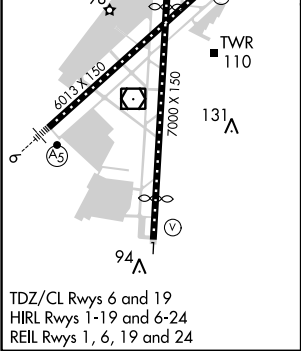
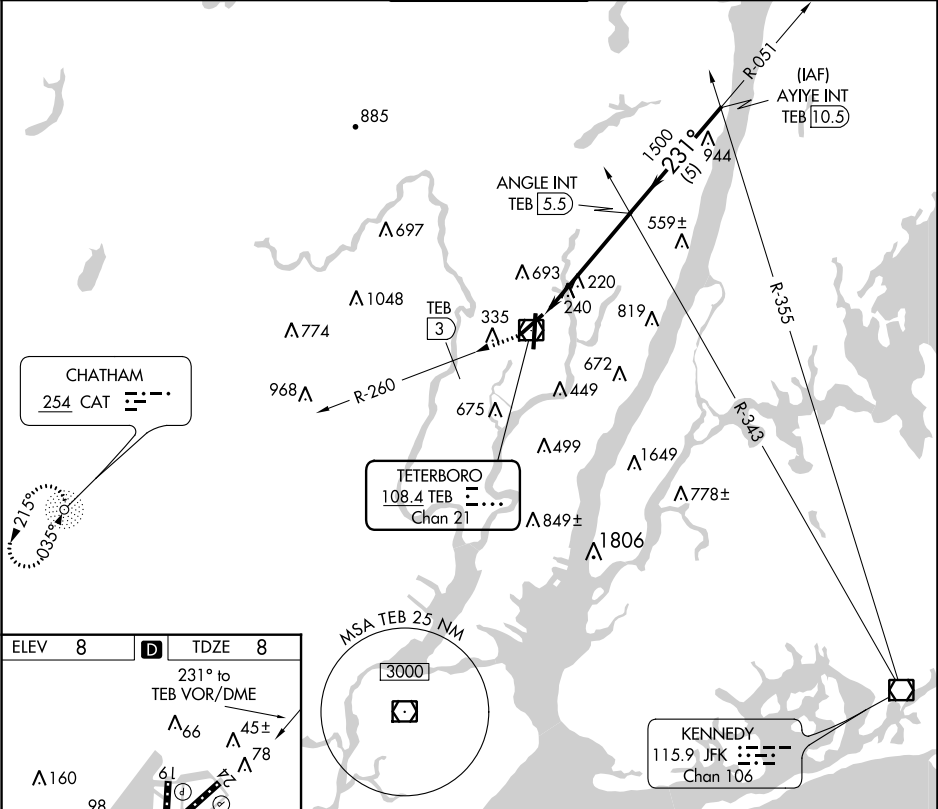
DME and RADAR required for procedure entry. DME required. ADF and DME required for missed approach.

⚠

Circling NA for Cats B, C and D NW of Rwy 6 and 19. Rwy 24 helicopter visibility reduction below 1 SM NA. Straight-in Rwy 24, Circling Rwy 24 at night, operational VGSI required, remain on or above VGSI glidepath until threshold.

MISSED APPROACH: Climbing right turn to 1500 on TEB R-260 to 3 DME then climb to 2000 direct CAT NDB and hold.

D-ATIS	NEW YORK APP CON	TETERBORO TOWER	GND CON	CLNC DEL	CPDLC
114.2 132.85	127.6 379.9	119.5	121.9	128.05	



1500	TEB 3	2000	CAT	ANGLE INT TEB 5.5	AYIYE INT TEB 10.5
TEB R-260					
TEB VOR/DME	231°	1500			2000
0.7	4.9 NM	5 NM			
CATEGORY	A	B	C	D	
S-24	540-1	532 (600-1)	540-1½ 532 (600-1½)	540-1¾ 532 (600-1¾)	
CIRCLING	760-1 752 (800-1)	1000-1½ 992 (1000-1½)	1000-3 992 (1000-3)	1040-3 1032 (1100-3)	