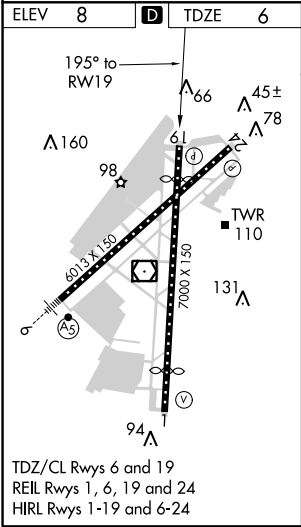
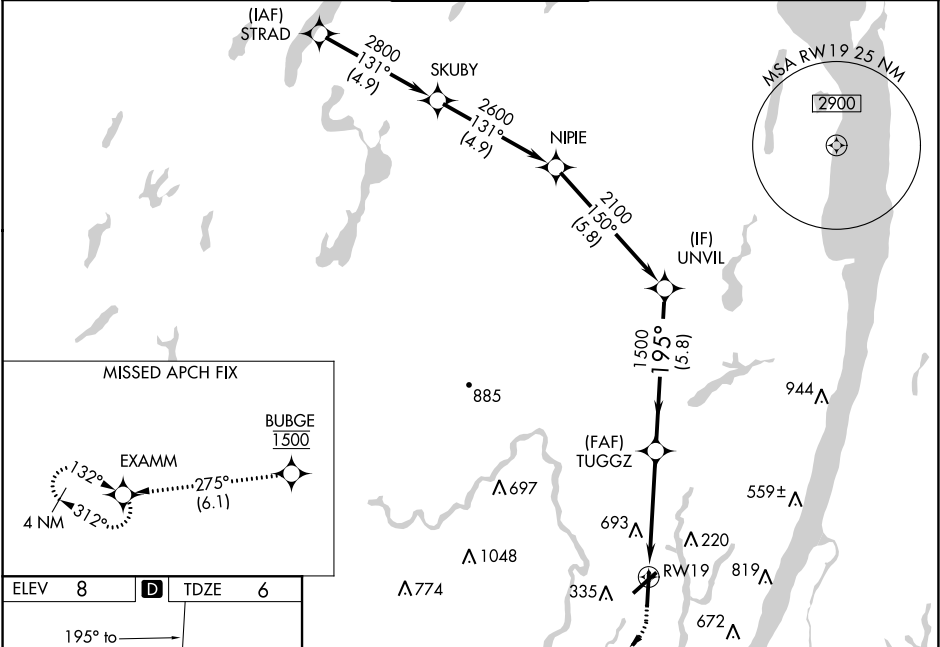


WAAS CH <b>97736</b> <b>W19A</b>	APP CRS <b>195°</b>	Rwy Idg TDZE Apt Elev	<b>6230</b> <b>6</b> <b>8</b>
--	------------------------	-----------------------------	-------------------------------------

RNAV (GPS) Y RWY 19  
TETERBORO (TEB)

RNP APCH. RADAR required.		MISSED APPROACH: Climb to 500 then climbing right turn direct BUBGE, cross BUBGE at 1500, then climb to 3000 on track 275° to EXAMM and hold, continue climb-in-hold to 3000.
<div><div>T</div><div>A</div></div>	Circling NA for Cats B, C, D northwest of Rwy 6-19. For uncompensated Baro-VNAV systems, LNAV/VNAV NA below -14°C or above 54°C.	

D-ATIS <b>114.2 132.85</b>	NEW YORK APP CON <b>127.6 379.9</b>	TETERBORO TOWER <b>119.5</b>	GND CON <b>121.9</b>	CLNC DEL <b>128.05</b>	CPDLC
-------------------------------	--	---------------------------------	-------------------------	---------------------------	-------



500 ↑	BUBGE 1500 ↑	3000 ↑	tr 275°	EXAMM ↑	UNVIL 2100
*LNAV only					
TUGGZ 1500					
* 2.8 NM to RW19					
RW19					
2.8 NM 1.7 NM 5.8 NM					
195°					
GP 3.00° TCH 54					
CATEGORY	A		B		D
LPV DA	219-3/4		213 (300-3/4)		
LNAV/ VNAV DA	1096-4		1090 (1100-4)		
LNAV MDA	960-1 1/4 954 (1000-1 1/4)	960-1 1/2 954 (1000-1 1/2)	960-3 954 (1000-3)		
CIRCLING	960-1 1/4 952 (1000-1 1/4)	960-1 1/2 952 (1000-1 1/2)	960-3 952 (1000-3)	1040-3 1032 (1100-3)	

NE-2, 03 DEC 2020 to 31 DEC 2020

NE-2, 03 DEC 2020 to 31 DEC 2020