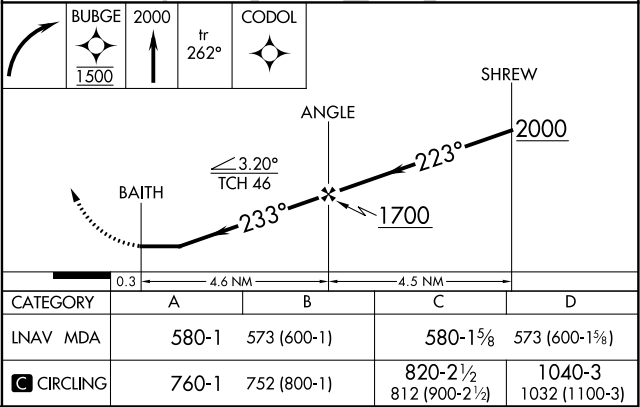
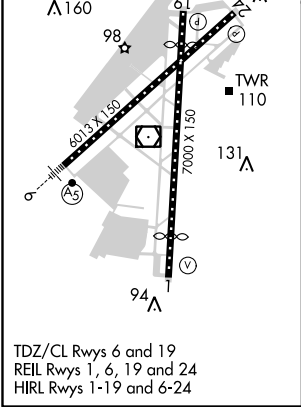
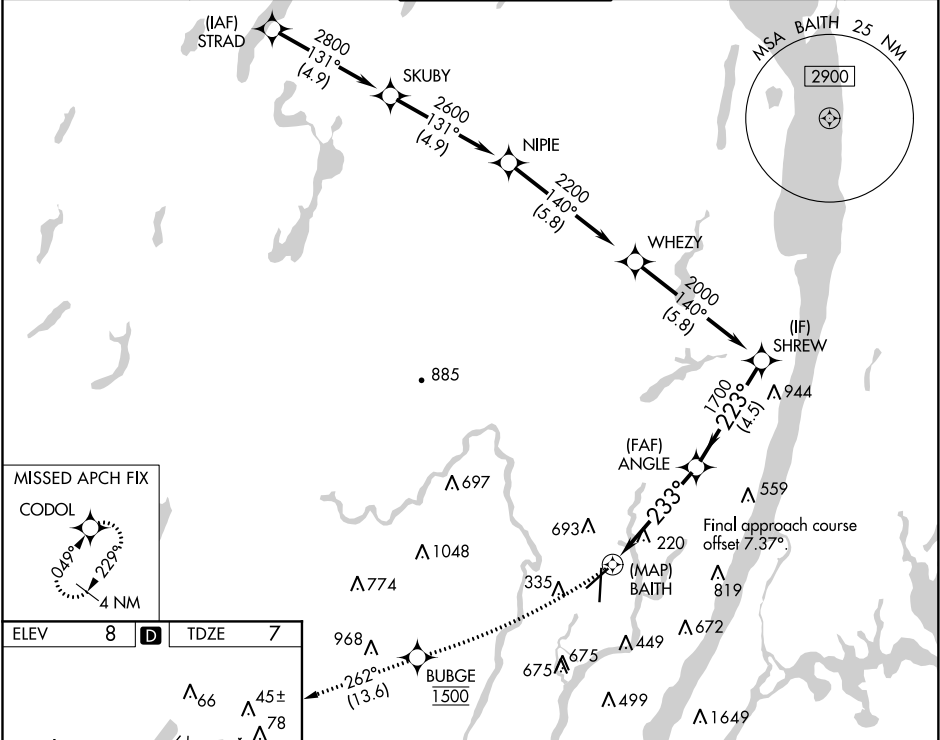


APP CRS	Rwy Idg	6013
233°	TDZE	7
	Apt Elev	8

RNAV (GPS) RWY 24
TETERBORO (TEB)

RNP APCH. RADAR required.			MISSED APPROACH: Climbing right turn direct BUBGE, cross BUBGE at 1500 then climb to 2000 on track 262° to CODOL and hold.		
D-ATIS 114.2 132.85			NEW YORK APP CON 127.6 379.9		
TETERBORO TOWER 119.5			GND CON 121.9		
CLNC DEL 128.05			CPDLC		



NE-2, 03 DEC 2020 to 31 DEC 2020

NE-2, 03 DEC 2020 to 31 DEC 2020