

APP CRS	Rwy Idg	4000
329°	TDZE	692
	Apt Elev	692

RNAV (GPS) RWY 33

CHAUTAUQUA COUNTY/DUNKIRK (DKK)

RNP APCH.



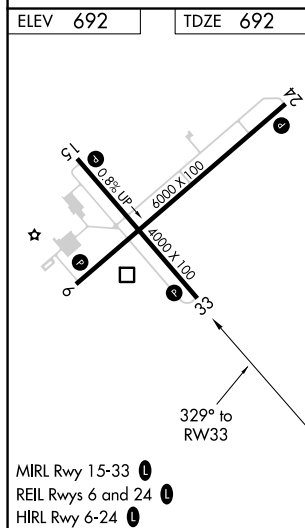
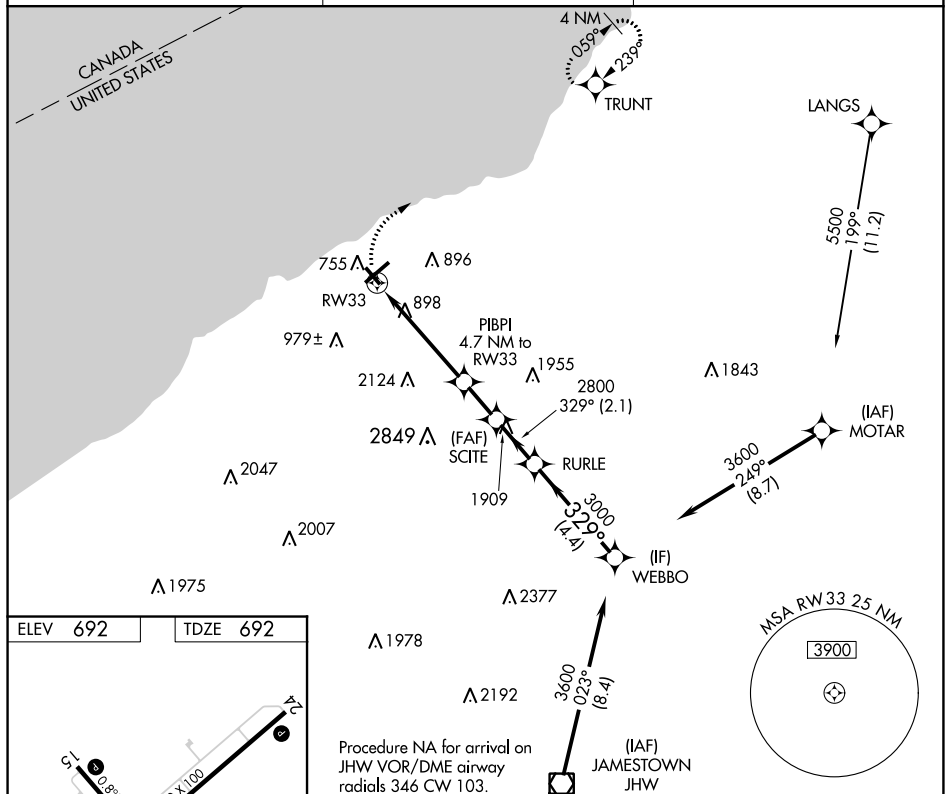
Circling Cat D NA southeast of Rwy 6 and southwest of Rwy 33.
Rwy 33 helicopter visibility reduction below 1 SM NA.
Straight-In Rwy 33 NA at night, Circling Rwy 6, 24, 33 NA at night.

MISSED APPROACH: Climbing right turn to 3200 direct TRUNT and hold.

 -20°C

ASOS
119.275

BUFFALO APP CON
126.5 317.6

UNICOM
123.075 (CTAF) **L**

CATEGORY	A	B	C	D
LNNAV MDA	1860-1¼ 1168 (1200-1¼)	1860-1½ 1168 (1200-1½)	1860-3	1168 (1200-3)
C CIRCLING	1860-1¼ 1168 (1200-1¼)	1860-1½ 1168 (1200-1½)	1860-3 1168 (1200-3)	2140-3 1448 (1500-3)

RNAV (GPS) RWY 33