

WAAS CH 62910 W25A	APP CRS 249°	Rwy Idg TDZE Apt Elev	5299 1721 1723
--	------------------------	-----------------------------	---

RNAV (GPS) RWY 25

CHAUTAUQUA COUNTY/JAMESTOWN (JHW)

⚠

⚠

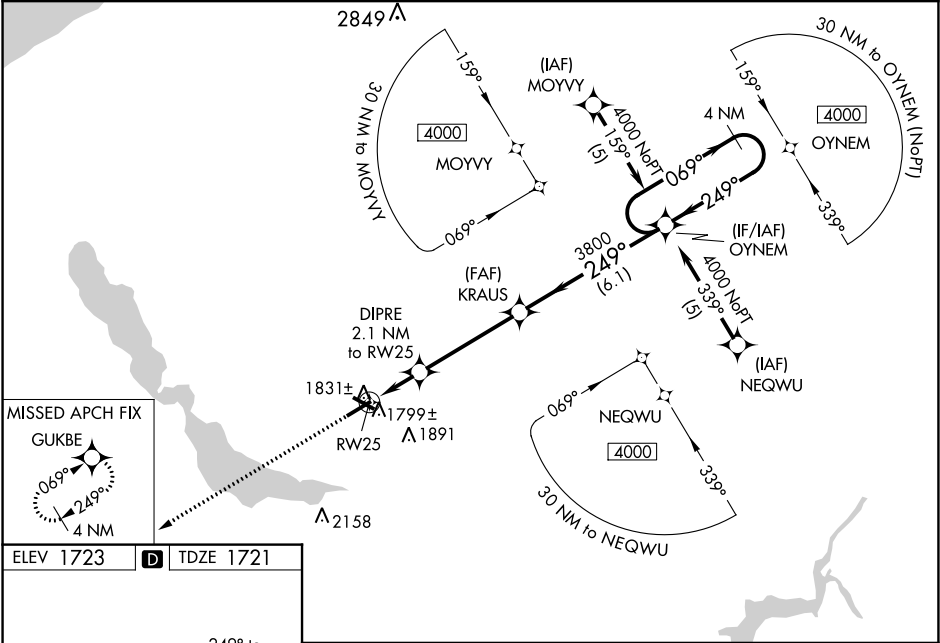
For uncompensated Baro-VNAV systems, LNAV/VNAV NA below -18°C (0°F) or above 54°C (130°F). DME/DME RNP-0.3 NA. When local altimeter setting not received, use Dunkirk altimeter setting: increase LPV DA to 2113 feet and visibility all Cats ½ SM, LNAV/VNAV DA to 2246 feet and visibility all Cats ½ SM; increase all MDAs 200 feet and visibility LNAV Cat C ½ SM, LNAV Cat D ¼ SM, Circling Cat C ½ SM and Circling Cat D ¾ SM. For inoperative MALSR, increase LNAV Cat D visibility to 1¼ mile. For inoperative MALSR when using Dunkirk altimeter setting, increase LPV all Cats visibility to 1½ mile. Baro-VNAV and VDP NA when using Dunkirk altimeter setting. Circling to Rwy 13/31 NA at night.

MALSR

MISSED APPROACH:

Climb to 4000 direct GUKBE and hold.

AWOS-3PT 118.425	BUFFALO APP CON ★ 126.05	CLNC DEL 126.05	UNICOM 122.7 (CTAF) 0
----------------------------	------------------------------------	---------------------------	---------------------------------



REIL Rwy 31
MIRL Rwy 13-31
HIRL Rwy 7-25

		4000		GUKBE		OYNEM		4 NM Holding Pattern	
*LNAV only		*1.1 NM to RW25		DIPRE 2.1 NM to RW25		KRAUS 3800		069° → 4000 ← 249°	
RW25		*2440		3800		249°		GP 3.00° TCH 48	
		1.1		1 NM		4.2 NM		6.1 NM	
CATEGORY		A		B		C		D	
LPV DA				1921-½		200 (200-½)			
LNAV/VNAV DA				2054-¾		333 (400-¾)			
LNAV MDA		2100-½		379 (400-½)				2100-1 379 (400-1)	
CIRCLING		2200-1 477 (500-1)		2240-1½ 517 (600-1½)		2340-2 617 (700-2)			