

LOC/DME I-JHW	APP CRS	Rwy Idg	5299
109.7	249°	TDZE	1721
Chan 34		Apt Elev	1723

ILS or LOC RWY 25

CHAUTAUQUA COUNTY/JAMESTOWN (JHW)

⚠

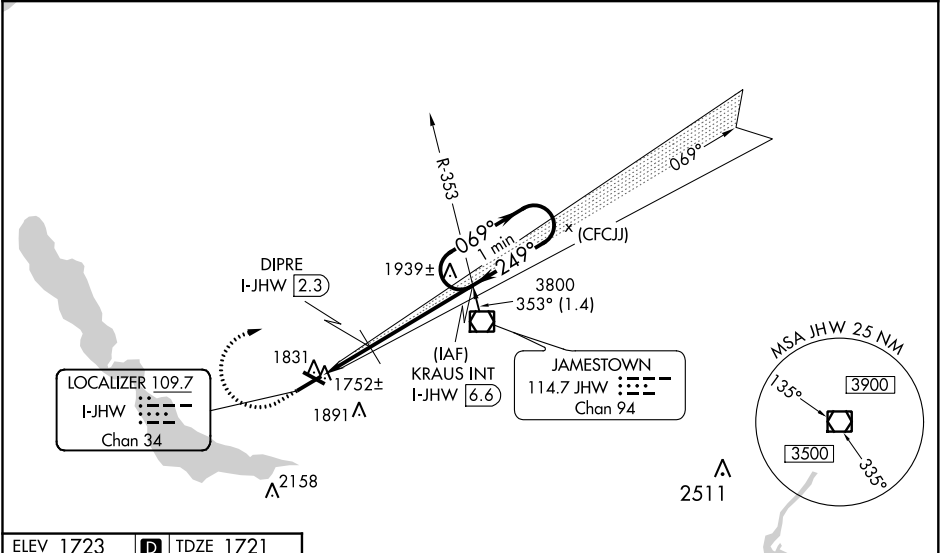
NA

Circling to Rwy 13/31 NA at night. Autopilot coupled approach NA below 2420. VDP NA with Dunkirk altimeter setting. Cat D SI NA when using Dunkirk altimeter. When local altimeter setting not received, use Dunkirk altimeter setting and increase S-ILS 25 DA to 2161 and all MDA 200 feet; increase S-ILS 25 all Cats visibility ¾ mile; increase S-LOC 25 Cats A and B visibility to ¾, Circling Cats A and B 1 ¼, increase S-LOC 25 Cats C and D visibility to 2, Circling Cats C visibility 2 ¾ and D visibility 3, DIPRE fix minimums increase S-LOC 25 Cats C and D visibility 1 ½, and Circling Cats C visibility 2 and Cat D visibility 2 ¾ mile. For inoperative MALSR when using Dunkirk altimeter setting, increase S-ILS 25 all Cats visibility 1 ½ mile. VDP NA when using Dunkirk altimeter setting.

MALSR

MISSED APPROACH: Climb to 2420 then climbing right turn to 3800 on heading 125° and I-JHW course NE to KRAUS INT/I-JHW 6.6 DME and hold.

AWOS-3PT	BUFFALO APP CON*	CLNC DEL	UNICOM
118.425	126.05	126.05	122.7 (CTAF)



REIL Rwy 31  
MIRL Rwy 13-31  
HIRL Rwy 7-25

<div>2420</div> <div>↑</div>	<div>3800</div> <div>hdg 125°</div>	<div>LOC crs NE</div>	<div>KRAUS INT</div>	<div>KRAUS INT I-JHW 6.6</div>	<div>One Minute Holding Pattern</div>
<div>*LOC only.</div>	<div>I-JHW 0.2</div>	<div>I-JHW 1.1</div>	<div>DIPRE I-JHW 2.3</div>	<div>249°</div>	<div>069°</div>
<div>1 NM</div>	<div>1.1 NM</div>	<div>4.3 NM</div>	<div>3800</div>	<div>249°</div>	<div>3800</div>
<div>CATEGORY</div>	<div>A</div>	<div>B</div>	<div>C</div>	<div>D</div>	<div>GS 3.00° TCH 48</div>
<div>S-ILS 25</div>	<div>1971-1/2</div>	<div>250 (300-1/2)</div>			
<div>S-LOC 25</div>	<div>2420-1/2</div>	<div>699 (700-1/2)</div>	<div>2420-1/2</div>	<div>699 (700-1/2)</div>	
<div>CIRCLING</div>	<div>2420-1</div>	<div>697 (700-1)</div>	<div>2420-2</div>	<div>2420-2 1/4</div>	<div>697 (700-2 1/4)</div>
<div>DIPRE FIX MINIMUMS (DME REQUIRED)</div>					
<div>S-LOC 25</div>	<div>2080-1/2</div>	<div>359 (400-1/2)</div>	<div>2080-5/8</div>	<div>359 (400-5/8)</div>	
<div>CIRCLING</div>	<div>2200-1</div>	<div>477 (500-1)</div>	<div>2200-1/2</div>	<div>2340-2</div>	<div>477 (500-1/2)</div>
			<div>477 (500-1/2)</div>	<div>617 (700-2)</div>	