

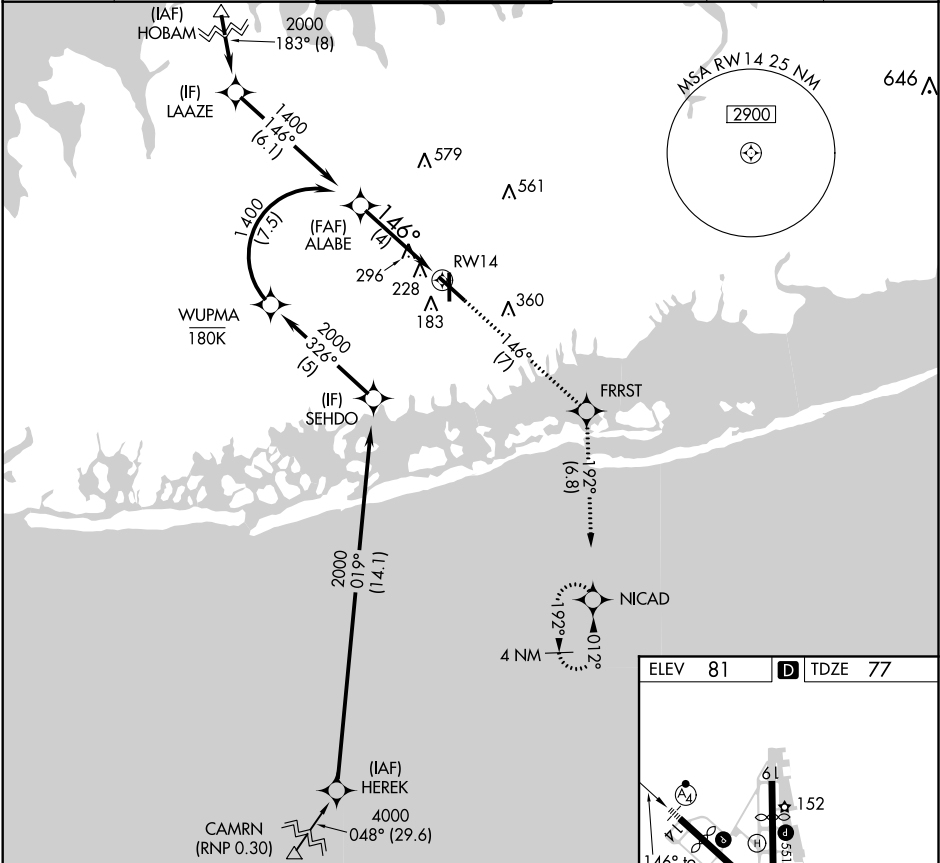
APP CRS	Rwy Idg	6157
146°	TDZE	77
	Apt Elev	81

RNAV (RNP) Z RWY 14

REPUBLIC (F'RG)

RNP AR APCH. RF required from HEREK.	MALSF A4	MISSED APPROACH: Climb to 2000 on track 146° to FRRST and on track 192° to NICAD and hold.
For uncompensated Baro-VNAV systems, procedure NA below -12°C or above 48°C. For inop ALS, increase all Cats visibility to 1 3/8 SM.		

ATIS 126.65	NEW YORK APP CON 128.125 269.0	REPUBLIC TOWER ★ 118.8 (CTAF) 279.65	GND CON 121.6 269.6	CLNC DEL 128.25	UNICOM 122.95
----------------	-----------------------------------	---	------------------------	--------------------	------------------



VGSI and RNAV glidepath not coincident (VGSI Angle 3.00/TCH 50).

ALABE 1400 146°

GP 3.00° TCH 60

4 NM

RWY 14

See planview for multiple IF locations.

CATEGORY	A	B	C	D
RNP 0.30 DA		502- 7/8	425 (500-7/8)	

AUTHORIZATION REQUIRED

ELEV 81	TDZE 77
---------	---------

MIRL Rwy 1-19 1
MIRL Rwy 14-32 1
REIL Rws 1, 19, and 32 1

NE-2, 03 DEC 2020 to 31 DEC 2020

NE-2, 03 DEC 2020 to 31 DEC 2020