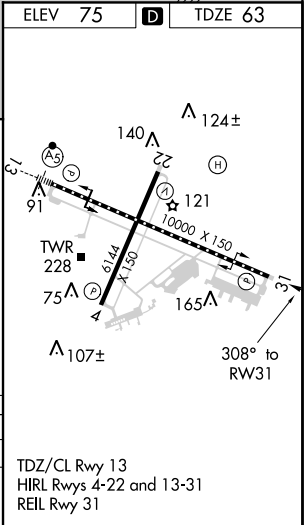
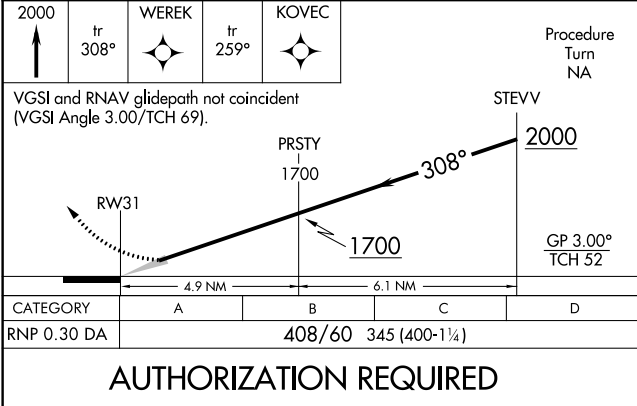
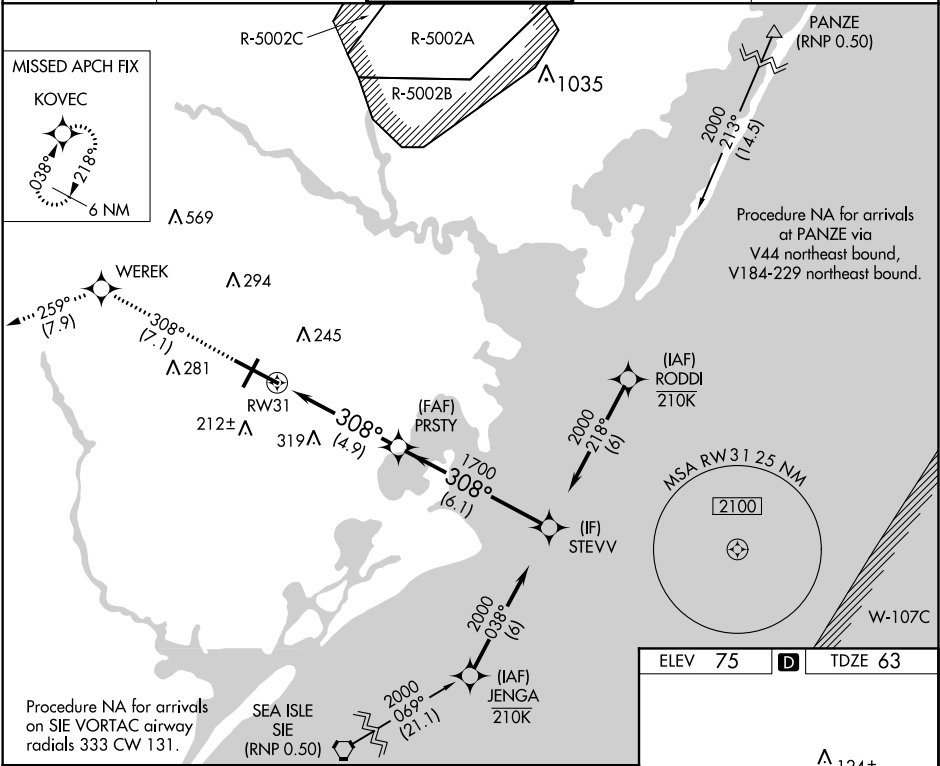


APP CRS	Rwy ldg	10000
308°	TDZE	63
	Apt Elev	75

RNAV (RNP) Z RWY 31
ATLANTIC CITY INTL (ACY)

GPS Required. Procedure NA at night. For uncompensated Baro-VNAV systems, procedure NA below -13°C (8°F) or above 54°C (130°F).	MISSED APPROACH: Climb to 2000 on track 308° to WEREK on track 259° to KOVEC and hold.
---	---

ATIS 125.725 316.15	ATLANTIC CITY APP CON 124.6 327.125	ATLANTIC CITY TOWER 120.3 239.0	GND CON 121.9 284.6	CLNC DEL 127.85 353.775
------------------------	--	------------------------------------	------------------------	----------------------------



NE-2, 03 DEC 2020 to 31 DEC 2020

NE-2, 03 DEC 2020 to 31 DEC 2020