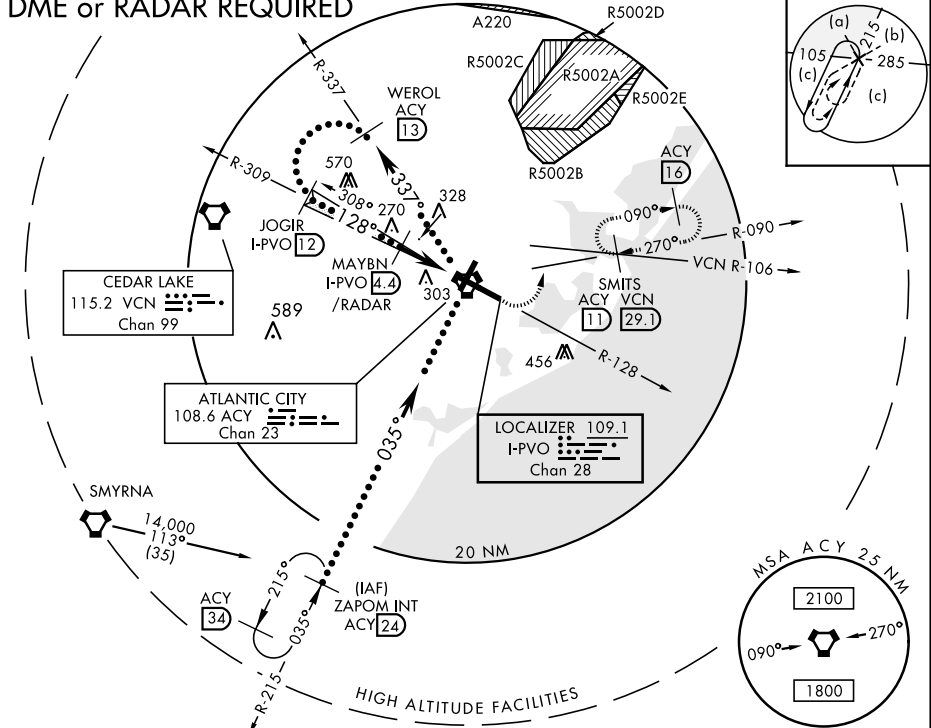


HI-ILS or LOC RWY 13

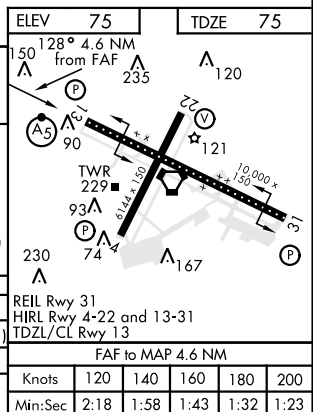
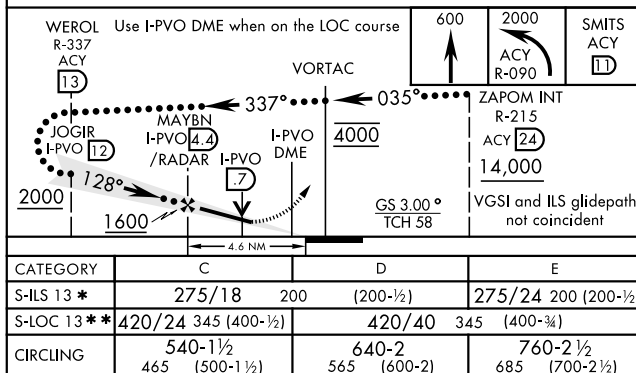
LOC/DME I-PVO 109.1 Chan 28	APCH CRS 128°	Rwy ldg 10,000 TDZE Arpt Elev 75 75	JAL-669 [USAF]	ATLANTIC CITY INTL (KACY)
<p>▽ * When ALS inop, increase RVR to 40 and vis to $\frac{3}{4}$ mile.</p> <p>▲ ** When ALS inop, increase RVR to 50 and vis to 1 mile.</p>			<p>MALSR</p> <p>AS </p> <p>MISSED APPROACH: Climb to 600 then climbing left turn to 2000 via ACY R-090 to SMITS INT/ACY 11 DME and hold; or when directed by ATC, climb to 600 then climbing left turn to 2000 via heading 076° and VCN R-106 to SMITS INT/VCN 29.1 DME and hold E. RT. hda 286° inbound.</p>	

ATIS		ATLANTIC CITY APP CON		ATLANTIC CITY TOWER		GND CON		CLNC DEL		ASR
125.725	316.15	130°- 309°	124.6 327.125	120.3	239.0	121.9	284.6	127.85	353.775	

DME or RADAR REQUIRED



EMERG SAFE ALT 100 NM 4200



ATLANTIC CITY, NEW JERSEY

39°27'N-74°35'W

ATLANTIC CITY INTL (KACY)

Amdt 4C 04FEB16

HI-ILS or LOC RWY 13