




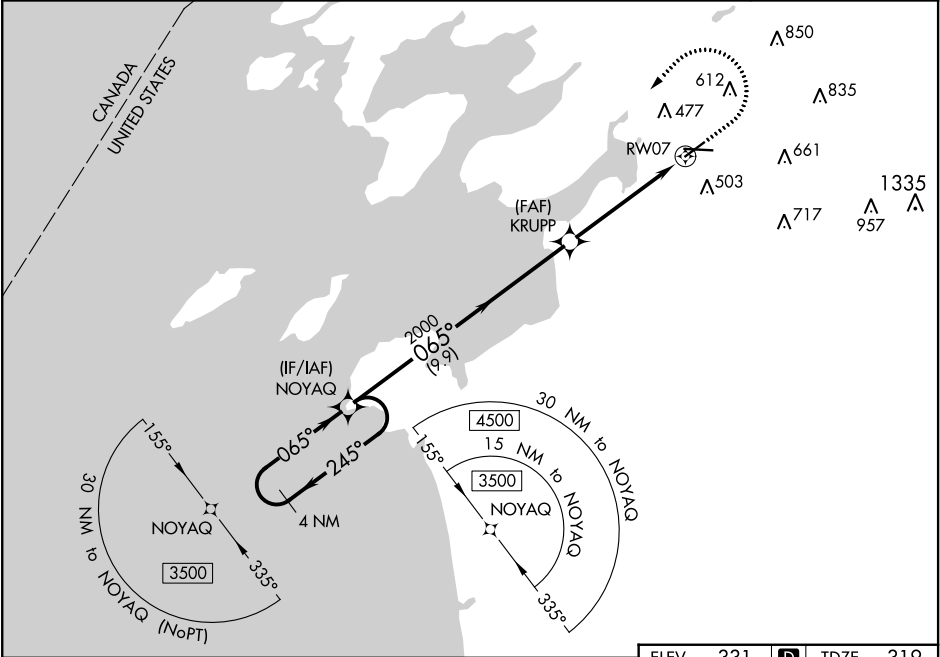


WAAS CH 82510 W07A	APP CRS 065°	Rwy Idg TDZE Apt Elev	4784 319 331
--	------------------------	-----------------------------	---

RNAV (GPS) RWY 7

WATERTOWN INTL (ART)

RNP APCH.			MALSR		MISSED APPROACH: Climb to 900 then climbing left turn to 3500 direct NOYAQ and hold.
For inop ALS, increase LPV, LNAV/VNAV visibilities to ¾ SM and LNAV Cat C/D visibilities to 1¾ SM. For uncompensated Baro-VNAV systems, LNAV/VNAV NA below -18°C or above 54°C.			 		
  -37°C					
ASOS 132.325	GTB ATIS 119.525	WHEELER-SACK APP CON 124.875 257.6	CLNC DEL 120.8	UNICOM 123.0 (CTAF) 	



4 NM Holding Pattern		NOYAQ		ELEV 331 TDZE 319	
3500		245°		900 3500 NOYAQ	
GP 3.00° TCH 51		065°		* LNAV only	
2000		065°		KRUPP 2000	
9.9 NM		3.9 NM		1.3 NM to RW07	
CATEGORY		A		B	
LPV DA		519-½		200 (200-½)	
LNAV/VNAV DA		578-½		259 (300-½)	
LNAV MDA		780-½		461 (500-½)	
CIRCLING		960-1		629 (700-1)	
		980-1¾		649 (700-1¾)	
		1080-2½		749 (800-2½)	