
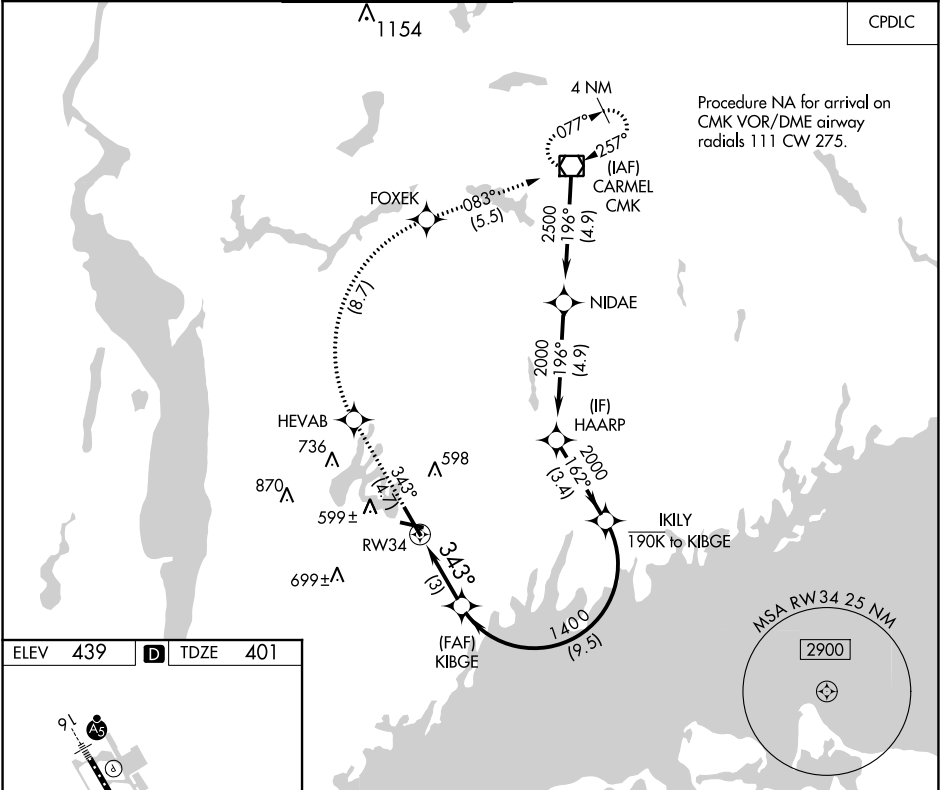


APP CRS 343°	Rwy Idg TDZE Apt Elev	6549 401 439
RNAV (RNP) Z RWY 34 WESTCHESTER COUNTY (HPN)		

	For uncompensated Baro-VNAV systems, procedure NA below -14°C (7°F) or above 54°C (130°F). RF required. GPS required.			MISSED APPROACH: Climb to 3000 on track 343° to HEVAB, right turn to FOXEK, then on track 083° to CMK VOR/DME and hold.		
D-ATIS 133.8	NEW YORK APP CON 120.8 126.4 257.65	WESTCHESTER TOWER ★ 118.575 (CTAF) 0 284.65	GND CON 121.825	CLNC DEL 127.25	CLNC DEL 126.4 (when twr closed)	UNICOM 122.95



ELEV 439	D	TDZE 401
REIL Rwy 11 and 34 HIRL Rwy 16-34 MIRL Rwy 11-29 TDZ/CL Rwy 16		
343° to RWY 34		
3000 ↑ tr 343°		
HEVAB		
FOXEK		
tr 083°		
CMK		
VGSi and RNAV glidepath not coincident (VGSi Angle 3.00/TCH 56).		
IKILY HAARP		
KIBGE 1400		
RW34 343°		
1400		
3 NM 9.5 NM 3.4 NM		
CATEGORY	A	B
RNP 0.30 DA	788-1½	387 (400-1½)
AUTHORIZATION REQUIRED		