

WAAS CH 45532 W24A	APP CRS 240°	Rwy Idg 5108 TDZE 592 Apt Elev 592
--	------------------------	---

RNAV (GPS) Z RWY 24
NIAGARA FALLS INTL (IAG)

▼ DME/DME RNP-0.3 NA. When local altimeter setting not received, use Buffalo Niagara
▲ Initial altimeter setting and increase all MDA 60 feet; increase LP Cats C and D visibility
 1/4 SM, LNAV Cats C and D visibility 1/2 SM, and Circling Cat C and D visibility 1/4 SM.
 Rwy 6, 10R, 24, 28L helicopter visibility reduction below 1 SM NA. Straight-in Rwy 24
 NA at night, Circling Rwy 6, 10R, 24, 28L NA at night. *Missed approach requires a minimum
 climb of 265 feet per NM to 2120; if unable to meet climb gradient, see RNAV (GPS) Y Rwy 24.

MISSED APPROACH: Climb to 1400 then climbing left turn to 3600 direct ZUPUV and hold.

ATIS 120.8 269.4	BUFFALO APP CON 126.5 317.6	NIAGARA TOWER★ 118.5 (CTAF) 0 349.0	GND CON 125.3 275.8	CLNC DEL 119.25 251.1	UNICOM 122.95
---------------------	--------------------------------	--	------------------------	--------------------------	------------------

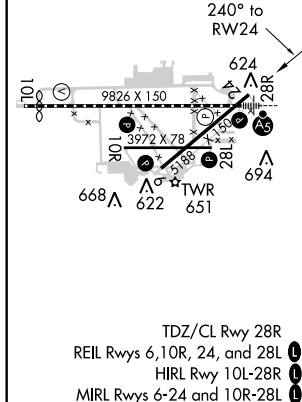
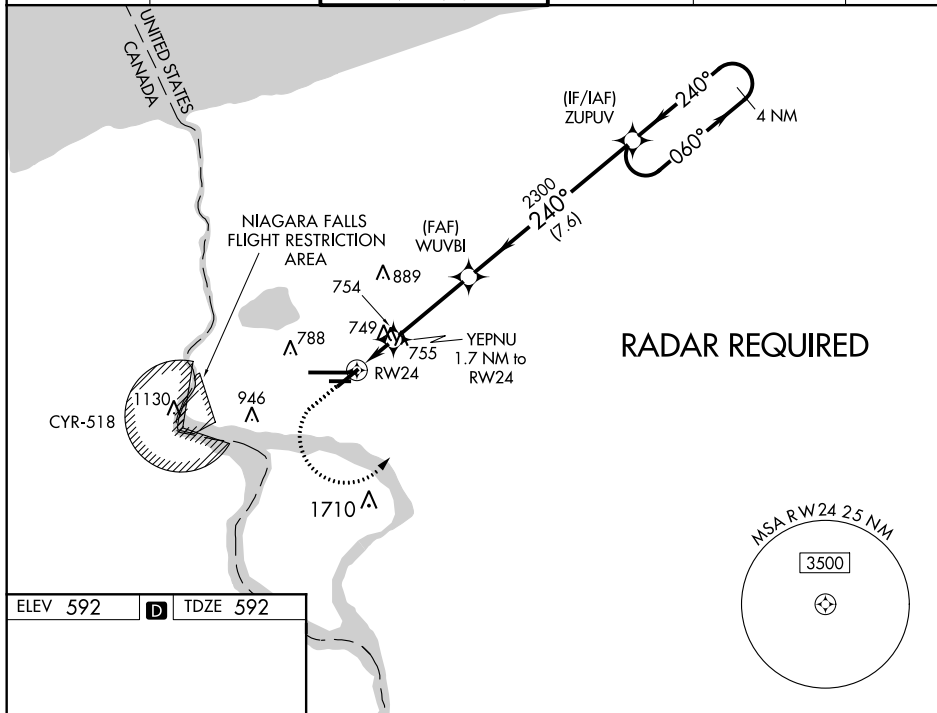


Diagram illustrating the ZUPUV 4 NM Holding Pattern. The pattern is defined by the following parameters:

- Pattern Type:** 4 NM Holding Pattern
- Center:** ZUPUV
- Altitudes:** 1180 (Initial Climb), 2300 (Holding Altitude)
- Distances:** 1.7 NM (from RW24 to start), 3.5 NM (from start to 240° turn), 7.6 NM (from 240° turn to ZUPUV)
- Angles:** 180°, 240°, 060°, 240°
- Navigation Aids:** RW24, YEPNU (1.7 NM from RW24), WUVBI (7.6 NM from 240° turn), ZUPUV
- Chart Reference:** 3.00° TCH 48

CATEGORY	A	B	C	D
LP MDA*	1000-1	408 (500-1)	1000-1½	408 (500-1½)
LNAV MDA*	1020-1	428 (500-1)	1020-1¼	428 (500-1¼)
C CIRCLING	1100-1	508 (600-1)	1280-2 688 (700-2)	1280-2¼ 688 (700-2¼)