

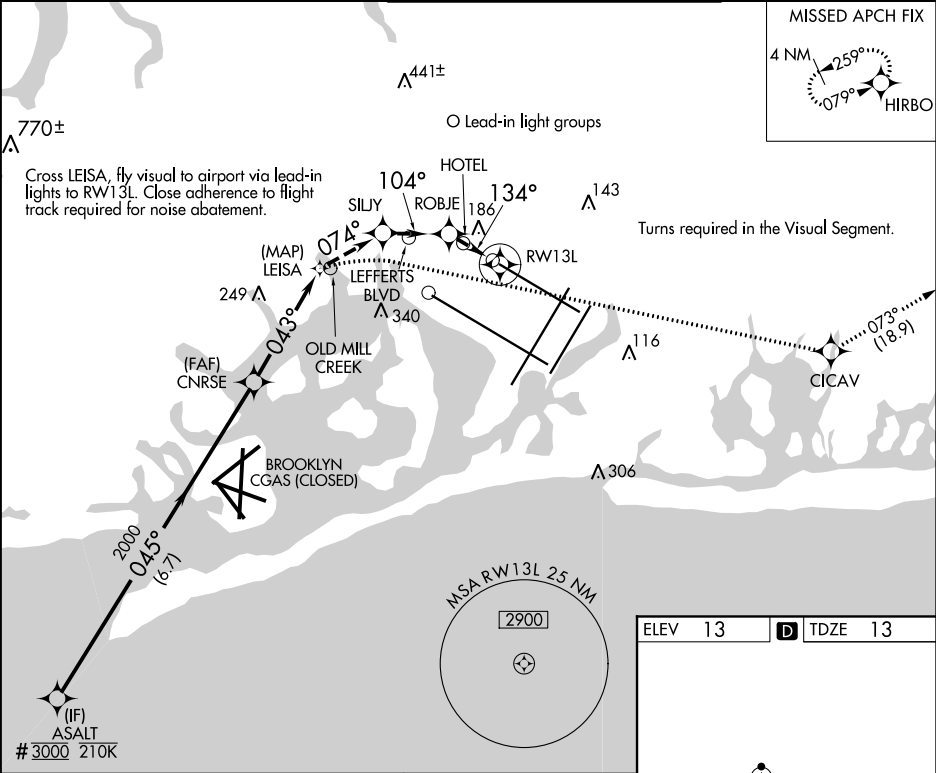
APP CRS  
**043°**

Rwy Idg **9093**  
TDZE **13**  
Apt Elev **13**

# RNAV (GPS) Z RWY 13L

JOHN F KENNEDY INTL (JFK)

RNP APCH.		ALSF-2	MISSED APPROACH: (Do not exceed 240K until CICA V). Climbing right turn to 4000 on heading 100°, when able direct CICA V and track 073° to HIRBO and hold. (ALTERNATE MISSED, go around or balked landing instructions: climb to 4000 along the depicted visual track to RW13L then direct to CICA V then on depicted route).				
<div><div></div><div></div></div>	Any inop lead-in light bank out of service increase visibility to 4 SM. RADAR required.						
D-ATIS (ARR/DEP)(ARR-NE) (ARR-SW)		NEW YORK APP CON	KENNEDY TOWER		GND CON	CLNC DEL	CPDLC
128.725 117.7 115.4		128.125 269.0	Rwys 4R/22L and 13L/31R 119.1 281.55 Rwys 4L/22R and 13R/31L 123.9 281.55		121.9 348.6	135.05 348.6	



VGSI and descent angle not coincident (VGSI Angle 3.00/TCH 74).					4000 CICAV	tr 073° HIRBO
ASALT # <u>3000</u>	CNRSE 2000		LEISA * 1246	SILJY * 835	* Check ALT. ROBJE * 456	
# 2000 minimum when authorized by ATC.	045° 2000		043° 3.00° TCH 58			
	6.7 NM		2.4 NM		1.3 1.2 1.2	
CATEGORY	A		B	C	D	
RNAV MDA	1260-2		1247 (1300-2)			
CIRCLING	NA					

REIL Rwy 4L

RLLS Rwy 13L and 13R

HIRL all Rwy

TDZ/CL Rwy 4L, 4R, 13L, 22L and 31R