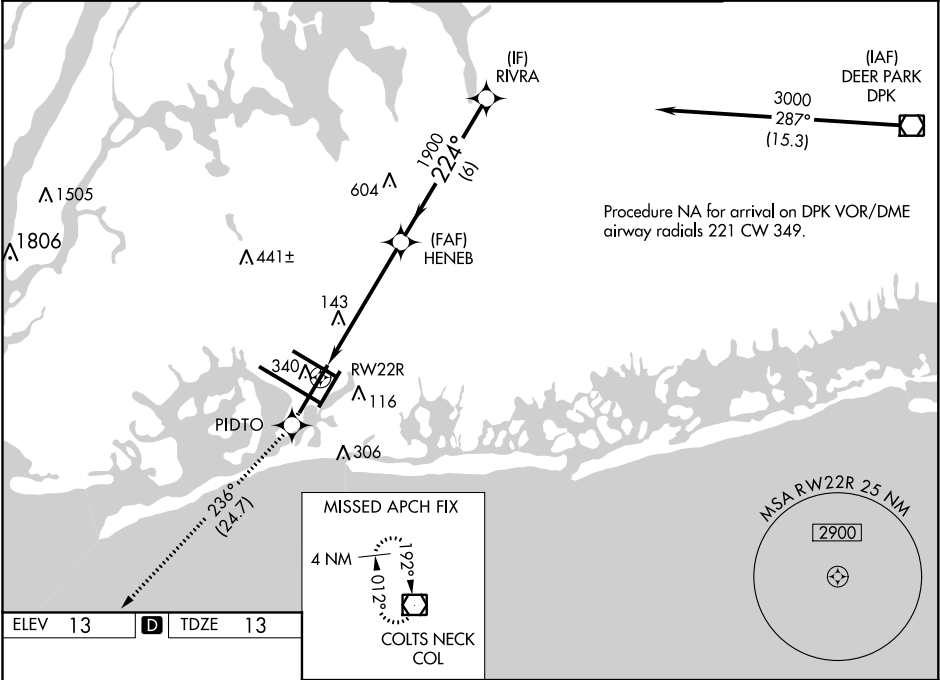


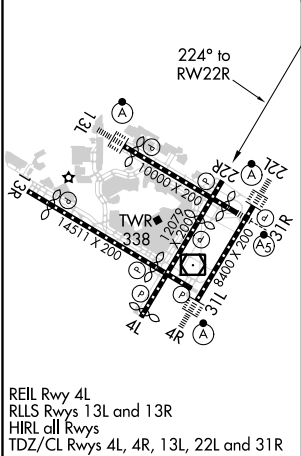
WAAS CH <b>40019</b> <b>W22B</b>	APP CRS <b>224°</b>	Rwy Idg <b>7795</b> TDZE <b>13</b> Apt Elev <b>13</b>
--	------------------------	---




RNAV (GPS) RWY 22R  
JOHN F KENNEDY INTL (JFK)

RNP APCH. Simultaneous approach authorized. Use of FD or AP providing RNAV track guidance required during simultaneous operations. LNAV procedure NA during simultaneous operations. For uncompensated Baro-VNAV systems, LNAV/VNAV NA below -12°C or above 54°C.			MISSED APPROACH: Climb to 4000 direct PIDTO and on track 236° to COL VOR/DME and hold.		
D-ATIS (ARR/DEP) (ARR-NE) (ARR-SW) <b>128.725 117.7 115.4</b>	NEW YORK APP CON <b>128.125 269.0</b>	KENNEDY TOWER Rwys 4R/22L and 13L/31R <b>119.1 281.55</b> Rwys 4L/22R and 13R/31L <b>123.9 281.55</b>	GND CON <b>121.9 348.6</b>	CLNC DEL <b>135.05 348.6</b>	CPDLC



ELEV <b>13</b>	<b>D</b>	TDZE <b>13</b>
----------------	----------	----------------



4000	PIDTO	COL	VGSI and RNAV glidepath not coincident (VGSI Angle 3.00/TCH 77).	
		tr 236°		
*LNAV only.				