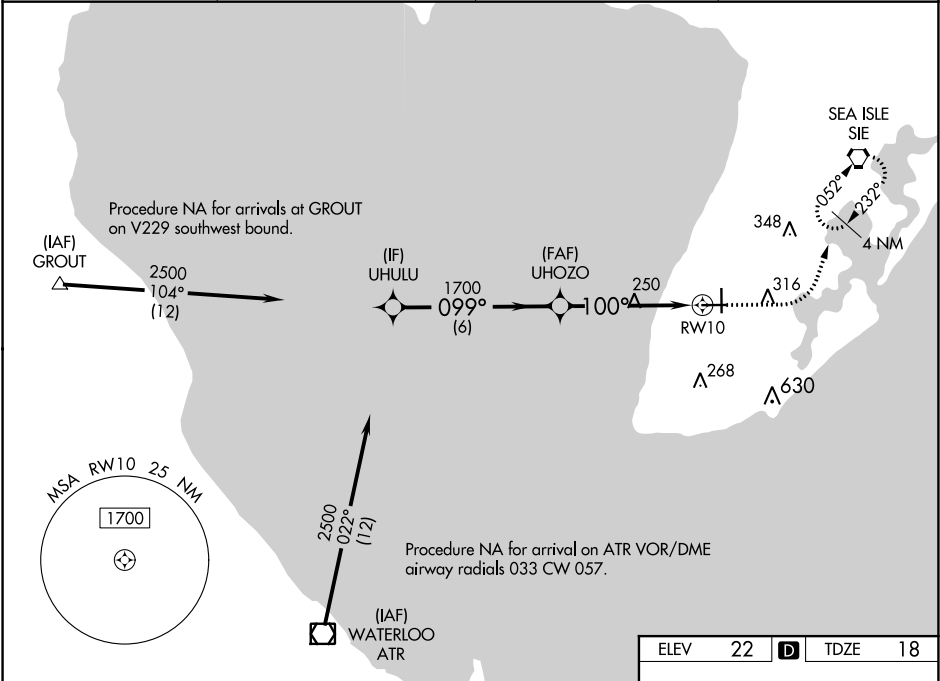


WAAS CH 93541 W10A	APP CRS 100°	Rwy Idg TDZE Apt Elev	4998 18 22
--	------------------------	-----------------------------	---------------------------------------

RNAV (GPS) RWY 10

CAPE MAY COUNTY (WWD)

RNP APCH. ▼ For uncompensated Baro-VNAV systems, LNAV/VNAV NA below -15° C or above 54° C. Circling NA for Cats C and D northeast of Rwy 19 and 28. Rwy 10 helicopter visibility reduction below ¾ SM NA. Circling Rwy 1 NA at night. ▲		MISSED APPROACH: Climb to 500 then climbing left turn to 2000 direct SIE VORTAC and hold.	
AWOS-3PT 118.275	ATLANTIC CITY APP CON 124.6 327.125	CLNC DEL 121.7	UNICOM 122.7 (CTAF) 0



VGSI and RNAV glidepath not coincident (VGSI Angle 3.00/TCH 45).					500 ↑	2000 ↘	SIE
					* LNAV only		
CATEGORY	A	B	C	D			
LPV DA	285-7/8		267 (300-7/8)				
LNAV/VNAV DA	336-1		318 (400-1)				
LNAV MDA	500-1 482 (500-1)		500-1 3/8 482 (500-1 3/8)				
CIRCLING	500-1 478 (500-1)		620-1 598 (600-1)				
	620-1 598 (600-1 1/2)		980-3 958 (1000-3)				
					HIRL Rwy 1-19		
					MIRL Rwy 10-28		