

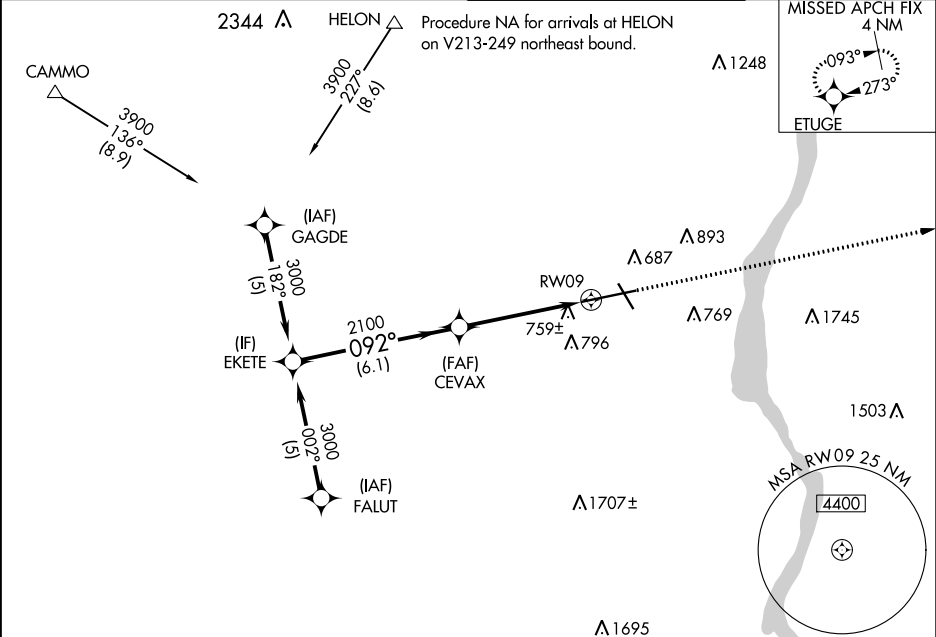
WAAS CH 62818 W09A	APP CRS 092°	Rwy Idg 8817 TDZE 482 Apt Elev 491
--	------------------------	---

RNAV (GPS) RWY 9

NEW YORK STEWART INTL (SWF')

RNP APCH.	ALSIF-2	MISSED APPROACH: Climb to 3100 direct ETUGE and hold.
Inop table does not apply to LNAV/VNAV. For uncompensated Baro-VNAV systems, LNAV/VNAV NA below -15°C or above 54°C.		

ATIS 124.575	NEW YORK APP CON 132.75 363.1	STEWART TOWER 121.0 254.4	GND CON 121.9
------------------------	---	-------------------------------------	-------------------------



ELEV 491		D		TDZE 482	
VGSI and RNAV glidepath not coincident (VGSI Angle 3.00/TCH 65).					
ETUGE		3100		*LNAV only	
*LNAV only		*1.5 NM to RW09		*LNAV only	
GP 3.00° TCH 60		6.1 NM		3.3 NM	
3000		2100		2100	
092°		2100		2100	
6.1 NM		3.3 NM		1.5	
CATEGORY	A	B	C	D	
LPV DA	682/24		200 (200-½)		
LNAV/ VNAV	1098-2		616 (700-2)		
LNAV MDA	1020/24	538 (600-½)	1020/55	1020/60	
			538 (600-1)	538 (600-1¼)	
CIRCLING	1200-1	709 (800-1)	1200-2	1200-2¼	
			709 (800-2)	709 (800-2¼)	
TDZ/CL Rwy 9 HIRL Rwy 9-27 and 16-34 REIL Rwy 16, 27 and 34					