

ILS RWY 9 (CAT II & III)
NEW YORK STEWART INTL (SWF)

MISSED APPROACH: Climb to 1200 then climbing left turn to 3000 direct IGN VOR/DME and hold.

IAF
SPARTA
115.7 SAX
Chan 104

One Minute
Holding Pattern

SW LOM

2096

272°

092°

2100

GS 3.00°
TCH 60

1200

3000

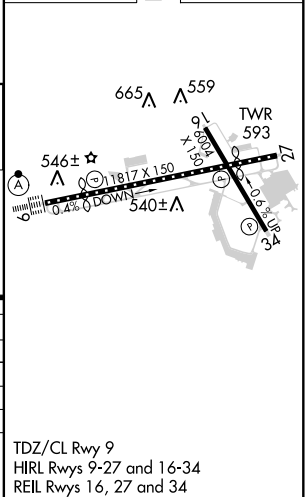
IGN

VGS1 and ILS glidepath not coincident
(VGS1 Angle 3.00/TCH 65).

CATEGORY	A	B	C	D
S-ILS 9		CAT II RA 97/12	100 DA 582	
S-ILS 9		CAT IIIa RVR 07		
S-ILS 9		CAT IIIb RVR 06		
S-ILS 9		CAT IIIc NA		

CATEGORY II & III ILS SPECIAL AIRCREW & AIRCRAFT CERTIFICATION REQUIRED

ELEV 491	D	TDZE 482
----------	----------	----------



NE-2, 03 DEC 2020 to 31 DEC 2020

NE-2. 03 DEC 2020 to 31 DEC 2020