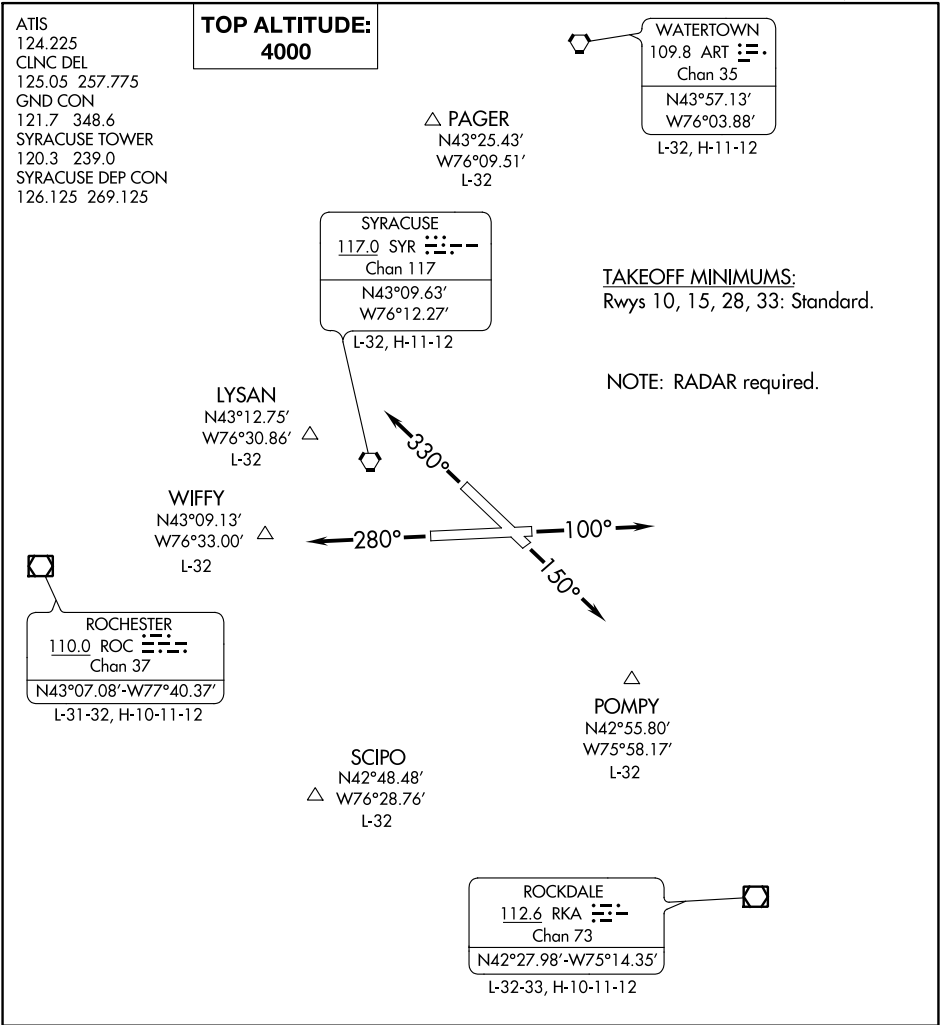


SYRACUSE TWO DEPARTURE

AL-411 (FAA)

SYRACUSE HANCOCK INTL (SYR)
SYRACUSE, NEW YORK



DEPARTURE ROUTE DESCRIPTION

- TAKEOFF RUNWAY 10: Climb on heading 100°, thence . . .
- TAKEOFF RUNWAY 28: Climb on heading 280°, thence . . .
- TAKEOFF RUNWAY 15: Climb on heading 150°, thence . . .
- TAKEOFF RUNWAY 33: Climb on heading 330°, thence . . .

. . . for RADAR vectors to intercept filed/assigned route or enroute fix or navaid.
Maintain 4000, expect further clearance to requested altitude/flight level ten minutes after departure.