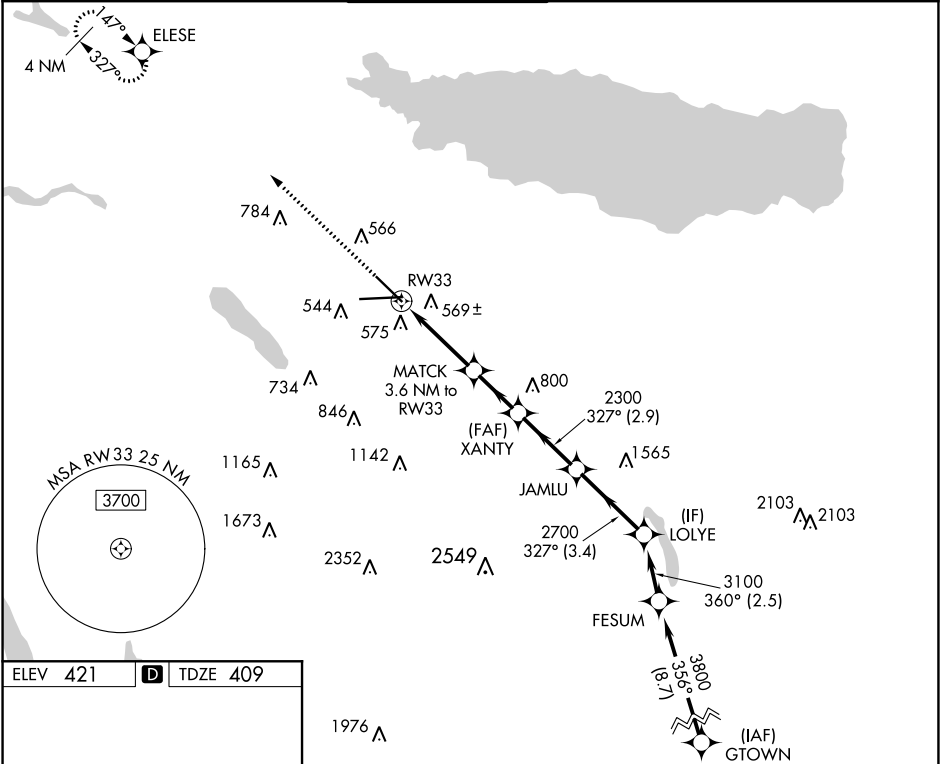


WAAS CH 81823 W33A	APP CRS 327°	Rwy Idg TDZE Apt Elev	7500 409 421
--	------------------------	-----------------------------	---

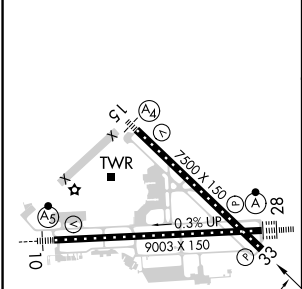
RNAV (GPS) RWY 33


SYRACUSE HANCOCK INTL (SYR)

RNP APCH.				MISSED APPROACH: Climb to 3000 direct ELESE and hold.	
▼ Rwy 33 helicopter visibility reduction below ¾ SM NA. For uncompensated					
▲ Baro-VNAV systems, LNAV/VNAV NA below -20°C or above 54°C.					
ATIS 124.225	SYRACUSE APP CON 126.125 269.125		SYRACUSE TOWER 120.3 239.0	GND CON 121.7 348.6	CLNC DEL 125.05 257.775



ELEV 421	D	TDZE 409
-----------------	----------	-----------------



TDZ/CL Rwy 28 HIRL Rwys 10-28 and 15-33	327° to RW33	CATEGORY	A	B	C	D
		LPV DA	715/45 306 (300-7½)			
		LNAV/ VNAV DA	882-1⅜ 473 (500-1⅜)			
		LNAV MDA	820/55 411 (400-1)		820/60 411 (400-1¼)	
		 CIRCLING	900-1 479 (500-1)	920-1 499 (500-1)	1020-1½ 599 (600-1½)	1180-2½ 759 (800-2½)

TDZ/CL Rwy 28
HIRL Rwy 10-28 and 15-33