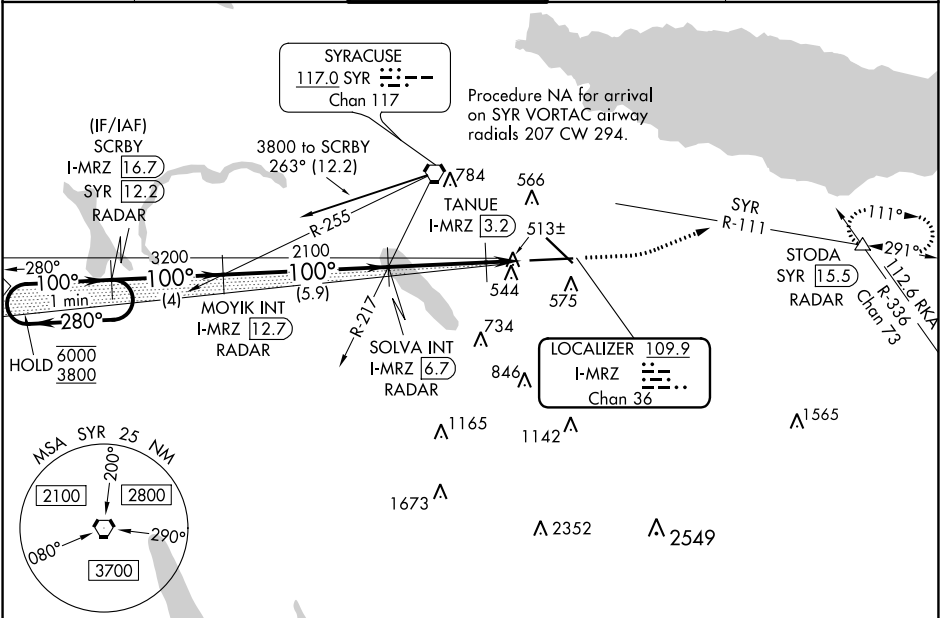


LOC/DME I-MRZ 109.9 Chan 36	APP CRS 100°	Rwy Idg TDZE 421 Apt Elev 421	9003
-------------------------------------------------	------------------------	---------------------------------------------------	-------------

ILS or LOC RWY 10
SYRACUSE HANCOCK INTL (SYR)

DME or RADAR required.	MALSR 	MISSED APPROACH: Climb to 900 then climbing left turn to 3000 on heading 081° and on SYR VORTAC R-111 to STODA INT/ SYR VORTAC 15.5 DME/RADAR and hold.
TANUE fix minimums, for inoperative ALS, increase S-LOC 10 Cats C and D visibility to RVR 5500. **RVR 1800 authorized with use of FD or AP or HUD to DA.		

ATIS 124.225	SYRACUSE APP CON 126.125 269.125	SYRACUSE TOWER 120.3 239.0	GND CON 121.7 348.6	CLNC DEL 125.05 257.775
------------------------	--------------------------------------------	--------------------------------------	-------------------------------	-----------------------------------



One Minute Holding Pattern		900 3000 SYR R-111 STODA		ELEV 421	TDZE 421
6000 3800 GS 3.00° TCH 55		2100 3200 2100 *980		*LOC only	
4 NM		5.9 NM		3.5 NM	
A		B		C	
S-ILS 10 **		621/24		200 (200-½)	
S-LOC 10		980/24		559 (600-½)	
CIRCLING		980-1		1020-1½ 599 (600-1½)	
TANUE FIX MINIMUMS (DME REQUIRED)		780/24		359 (400-½)	
S-LOC 10		780/24		359 (400-½)	
CIRCLING		900-1 479 (500-1)		920-1 499 (500-1)	
1020-1½ 599 (600-1½)		1180-2½ 759 (800-2½)		1180-2½ 759 (800-2½)	
TDZ/CL Rwy 28		HRL Rwy 10-28 and 15-33		FAF to MAP 5.1 NM	
Knots		60		90	
Min:Sec		5:06		3:24	