

WAAS CH <b>42722</b> <b>W04A</b>	APP CRS <b>040°</b>	Rwy Idg TDZE Apt Elev	<b>7001</b> <b>338</b> <b>378</b>
--	------------------------	-----------------------------	---

RNAV (GPS) RWY 4  
SCHENECTADY COUNTY (SCH)

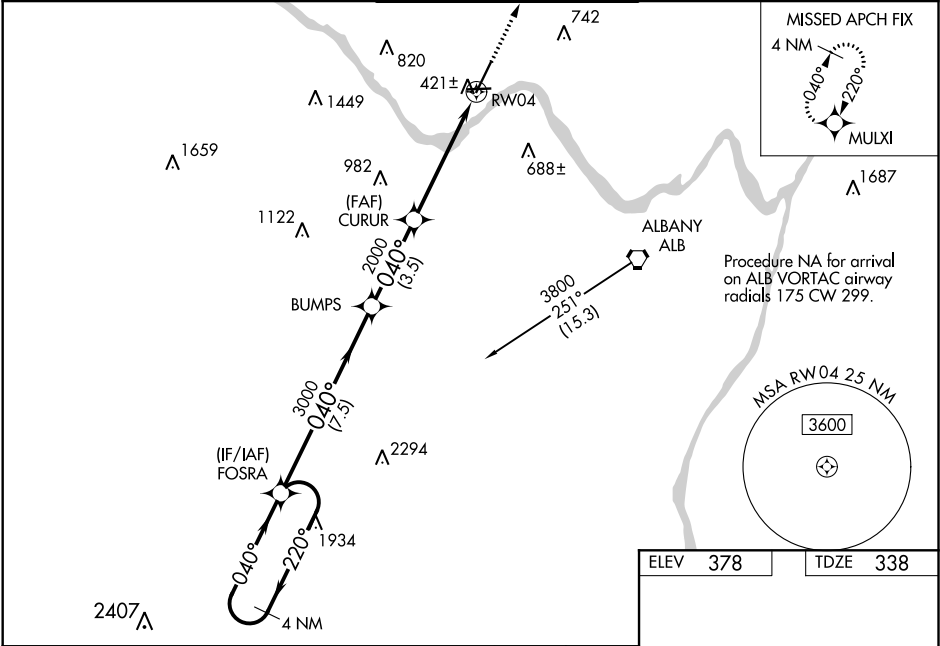
**NA** Night landing: Rwy 10, 15, 33 NA. Baro-VNAV NA when using Albany altimeter setting. For inop MALS, increase LNAV/VNAV all Cats visibility to 7/8 mile and LNAV Cat A/B visibility to 1 mile, Cat C/D to 1 1/8 mile. For uncompensated Baro-VNAV systems, LNAV/VNAV NA below -15°C (5°F) or above 54°C (130°F). DME/DME RNP-0.3 NA. VDP NA with Albany altimeter setting. When local altimeter setting not received, use Albany altimeter setting and increase all DA 33 feet and all MDA 40 feet. For inop MALS when using Albany altimeter setting, increase LNAV/VNAV all Cats and LNAV Cat A/B visibility to 1 mile and Cat C/D visibility to 1 1/8 mile. Inop table does not apply to LPV. When using Albany altimeter setting inop table does not apply to LPV. Helicopter visibility reduction below 3/4 SM NA.

MALS

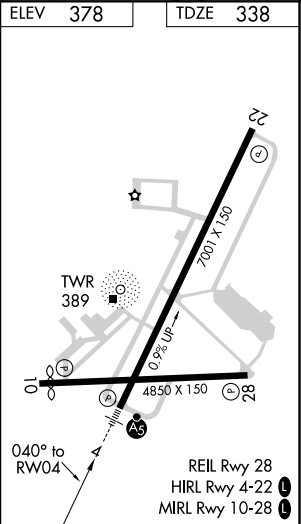


MISSED APPROACH:  
Climb to 3000 direct  
MULXI and hold.

AWOS-3 <b>119.275</b>	ALBANY APP CON <b>118.05 263.075</b>	SCHENECTADY TOWER ★ <b>121.3 (CTAF) 0 321.1</b>	GND CON <b>121.9</b>	UNICOM <b>122.95</b>
--------------------------	---	--	-------------------------	-------------------------



4 NM Holding Pattern		3000 MULXI	
FOSRA		* LNAV only.	
3700 ← 220°		* 1.3 NM to RWY 4	
040° →		RWY 4	
GP 3.00°			
TCH 55			
7.5 NM		3.5 NM	
3.8 NM		1.3 NM	
CATEGORY	A	B	C
LPV DA		538-3/4	200 (200-3/4)
LNAV/VNAV DA		605-3/4	267 (300-3/4)
LNAV MDA	800-3/4	462 (500-3/4)	800-1 462 (500-1)
CIRCLING	880-1	502 (600-1)	880-1 1/2 980-2 502 (600-1 1/2) 602 (700-2)



NE-2, 03 DEC 2020 to 31 DEC 2020

NE-2, 03 DEC 2020 to 31 DEC 2020