


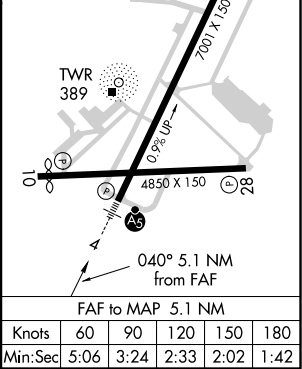
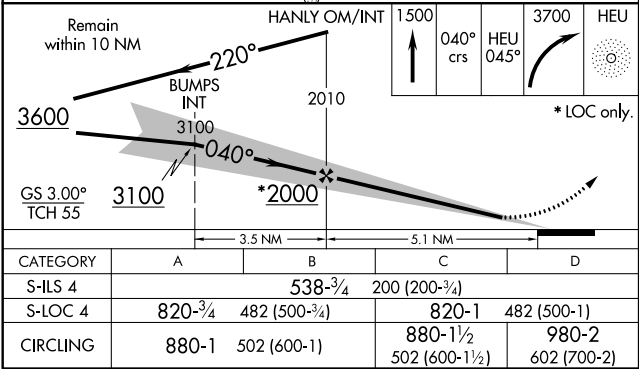
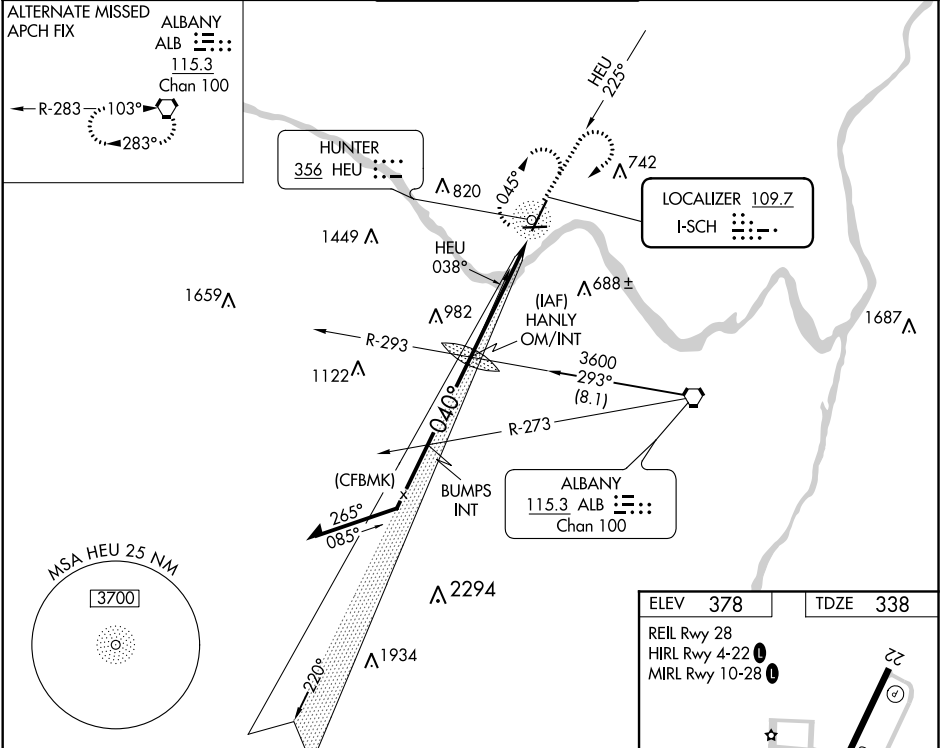
LOC I-SCH 109.7	APP CRS 040°	Rwy Idg TDZE Apt Elev	7001 338 378
---------------------------	------------------------	-----------------------------	---

ILS or LOC RWY 4
SCHENECTADY COUNTY (SCH)

NA Night landing: Rwy 10, 15, 33 NA. Inop table does not apply to S-ILS 4. For inop MALS, increase S-LOC 4 Cat A/B visibility to 1 mile and Cat C/D visibility to 1 3/4 mile. For inoperative MALS when using Albany altimeter setting, increase S-LOC 4 Cat A/B visibility to 1 mile. When using Albany altimeter setting inoperative table does not apply to S-ILS-4. ADF required. When local altimeter setting not received, use Albany altimeter setting and increase all DA 33 feet, and all MDA 40 feet. Helicopter visibility reduction below 3/4 SM NA.

MALS  **MISSED APPROACH:** Climb to 1500 on 040° course and on HEU NDB bearing 045° then climbing right turn to 3700 direct HEU NDB and hold, continue climb-in-hold to 3700.

AWOS-3 119.275	ALBANY APP CON 118.05 263.075	SCHENECTADY TOWER ★ 121.3 (CTAF) 0 321.1	GND CON 121.9	UNICOM 122.95
--------------------------	---	--	-------------------------	-------------------------



NE-2, 03 DEC 2020 to 31 DEC 2020

NE-2, 03 DEC 2020 to 31 DEC 2020