

ROCHESTER, NEW YORK

AL-351 (FAA)

20310

WAAS CH <b>61334</b> <b>W07A</b>	APP CRS <b>076°</b>	Rwy Idg <b>4000</b> TDZE <b>547</b> Apt Elev <b>559</b>
--	------------------------	---

**RNAV (GPS) RWY 7**  
FREDERICK DOUGLASS-GREATER ROCHESTER INTL (ROC)

**T** DME/DME RNP-0.3 NA. Helicopter visibility reduction  
**A** below  $\frac{3}{4}$  SM NA.

**MISSED APPROACH:** Climb to 1500 then climbing right turn to 3000 direct BILAW and hold.

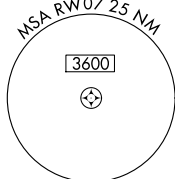
ATIS  
124.825

ROCHESTER APP CON  
119.55 269.6

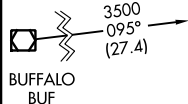
ROCHESTER TOWER  
118.3 254.3

GND CON  
**121.7**

CLNC DEL  
118.8 343.65

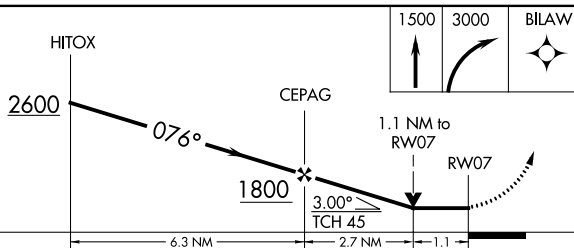


Procedure NA for arrivals  
on BUF VOR/DME airway  
radials 053 CW 158.

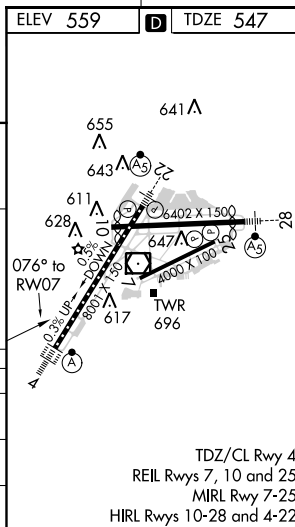
[illegible]

MISSED APCH FIX

Δ1951



CATEGORY	A	B	C	D
LP MDA	940-1	393 (400-1)	940-1 $\frac{1}{8}$	393 (400-1 $\frac{1}{8}$ )
LNAV MDA	1060-1	513 (600-1)	1060-1 $\frac{3}{8}$	513 (600-1 $\frac{3}{8}$ )
<b>C</b> CIRCLING	1060-1	501 (600-1)	1500-2 $\frac{3}{4}$ 941 (1000-2 $\frac{3}{4}$ )	1500-3 941 (1000-3)



ROCHESTER, NEW YORK  
Amdt 1A 05MAR15

FREDERICK DOUGLASS-GREATER ROCHESTER INTL (ROC)  
43°07'N-77°40'W      RNAV (GPS) RWY 7

RNAV (GPS) RWY 7

NE-2, 03 DEC 2020 to 31 DEC 2020

NE-2, 03 DEC 2020 to 31 DEC 2020